



The ABBEY

53'x28' | 1430 sq.ft | 3 Bedrooms | 3 Bathrooms

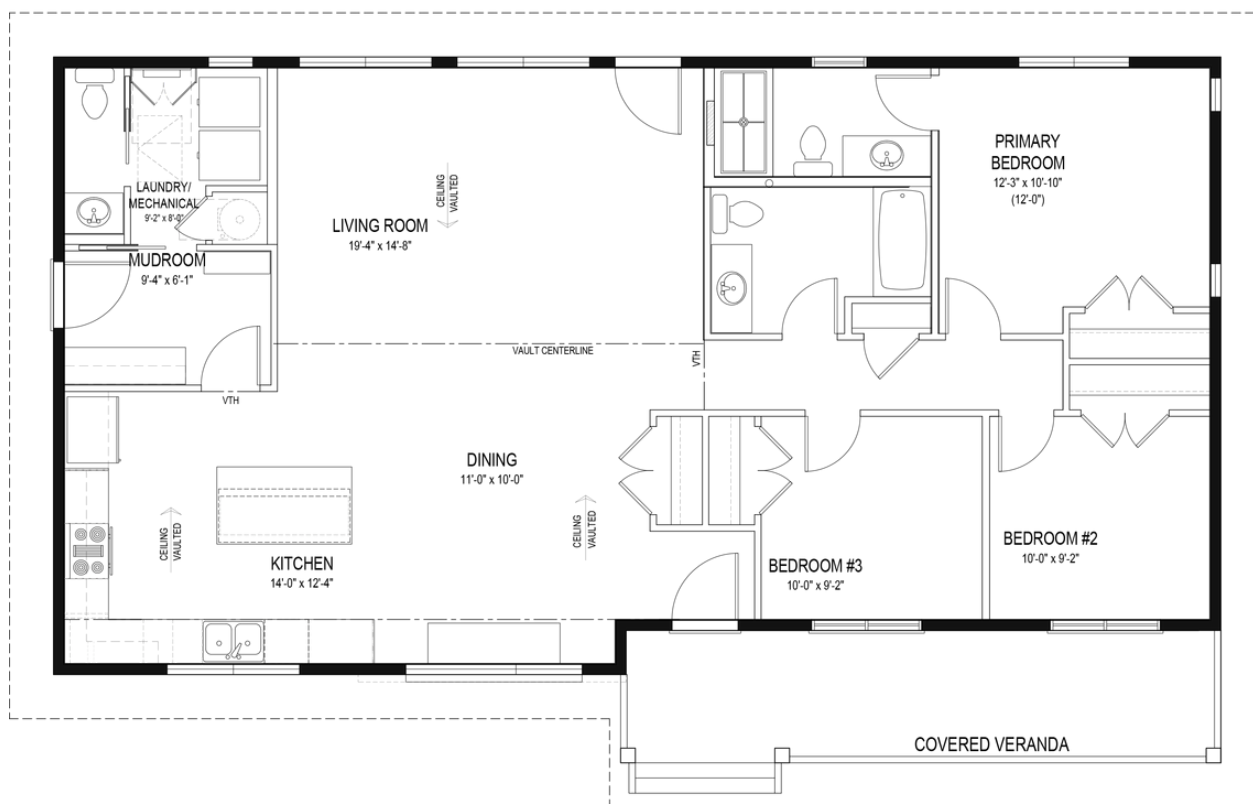
YOUR PLAN OR OURS

Not exactly what you're looking for?
All plans are fully customizable.



55 YEARS
ESTABLISHED 1969

**May be shown with optional features, including, but not limited to material and colours. Overall dimensions shown, excluding verandas.*



The Family Farmhouse

WELCOME HOME to the Abbey, our newest feature RTM home designed for families who appreciate thoughtful living and timeless design.

At 1,430 square feet, this quintessential family home strikes the perfect balance between efficiency, comfort, and everyday functionality. Every space has been carefully considered, with practical design choices and purposeful features that support the rhythm of daily family life.

From its welcoming curb appeal to its modern, family-friendly layout, the Willowbrook embodies enduring style without sacrificing convenience. Traditional charm, classic finishes, and thoughtful craftsmanship come together to create a home that feels both familiar and fresh - a place designed to be enjoyed for years to come. A home that is as beautiful as it is livable. Lasting value. Effortless comfort. A timeless sense of home.

- A covered veranda welcomes guests to your home.
- Vaulted ceilings make the living space feel larger.
- A side entrance mudroom make unloading the groceries easy with access to the kitchen.
- Practical upgrades in the kitchen, like heat-resistant porcelain countertops & slab-style cabinets make this space more than just eye candy.
- Oil rubbed bronze fixtures and honey bronze handles add warmth and old-school charm.
- Unexpected upgrades like solid pine doors show the durable quality of the home.



Western Canada's Most Trusted RTM Home Builder Since 1969