

**CUSTOM RADVILLE** | 1930 sq.ft.

**J&H HOMES**



**The CUSTOM RADVILLE** 58'x 34'6" | 1930 sq.ft. | 3 Bedrooms | 3 Bathrooms

### **YOUR PLAN OR OURS**

Not exactly what you're looking for?  
All plans are fully customizable.

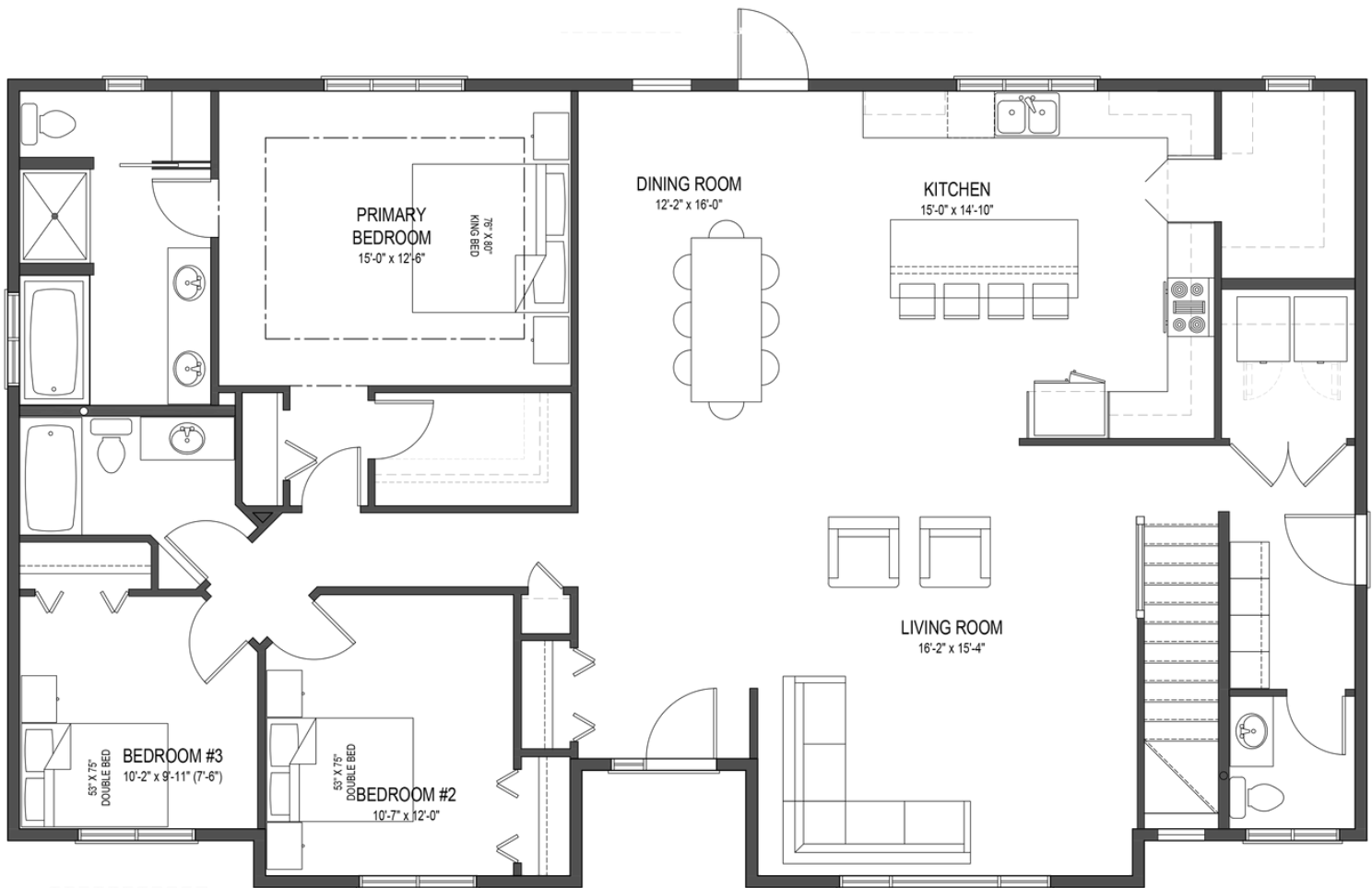
**55 YEARS**  
ESTABLISHED 1969

*\*May be shown with optional features, including, but not limited to material and colours. Overall dimensions shown, excluding verandas.*

**J&H HOMES**

**Western Canada's Most Trusted RTM Home Builder Since 1969**

J&H Homes | 2505 Ave C North, Saskatoon, SK | S7L 6A6 | [www.jhhomes.com](http://www.jhhomes.com) | 306.652.5322 | [info@jhhomes.com](mailto:info@jhhomes.com)



## The Family Home Fit for a Chef - 2.0

**WELCOME HOME** to this 1930 sq.ft. custom Radville. Settle into a home that embraces the simple pleasure you feel when your family gathers around your table with the food you have prepared for them.

- A chef's kitchen blends luxury and functionality, complete with a secret butler's pantry and over-sized island
- The semi-open plan with huge dining area allows for easy entertaining, with direct access to your backyard.
- A private "bedroom wing", including luxury primary suite, gives you a quiet place to lie down after your busy day.
- Convenient, easy-access mud room / laundry / powder room off your future garage.
- This custom plan boasts 206 sq.ft. more than the original Radville plan, with additional storage throughout and a new, even more functional, layout.



**Western Canada's Most Trusted RTM Home Builder Since 1969**

J&H Homes | 2505 Ave C North, Saskatoon, SK | S7L 6A6 | [www.jhhomes.com](http://www.jhhomes.com) | 306.652.5322 | [info@jhhomes.com](mailto:info@jhhomes.com)