

CUSTOM AVONLEA | 1624 sq.ft.

J&H HOMES



The **CUSTOM AVONLEA** | 58'X30' | 1624 sq.ft. | 3 Bedrooms | 2 Bathrooms

55
YEARS

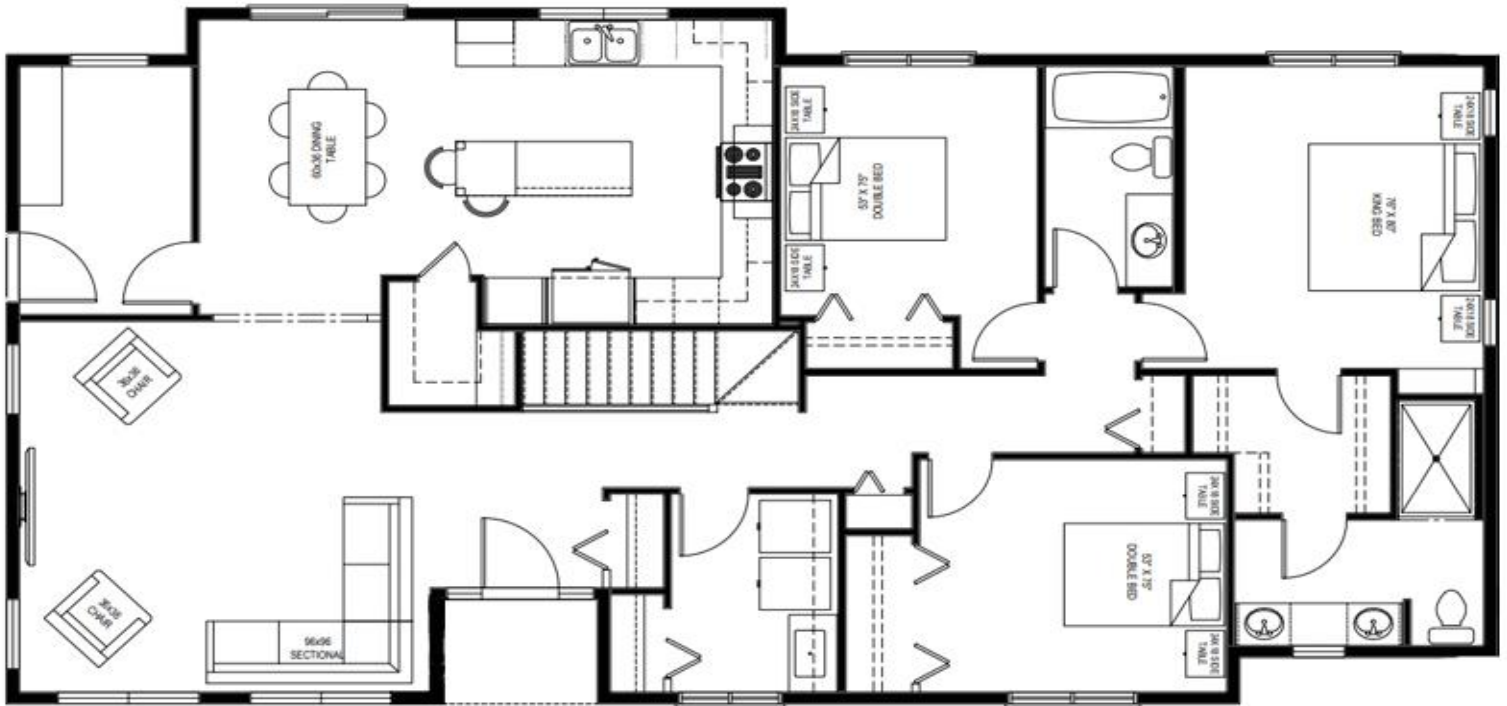
YOUR PLAN OR OURS
Not exactly what you're looking for?
All plans are fully customizable.

*May be shown with optional features, including, but not limited to material and colours. Overall dimensions shown, excluding verandas.

J&H
HOMES

Western Canada's Most Trusted RTM Home Builder Since 1969

J&H Homes | 2505 Avenue C North, Saskatoon, SK | S7L 6A6 | www.jhhomes.com | 306.652.5322 | info@jhhomes.com



The CUSTOM AVONLEA

The English Farmhouse

WELCOME HOME to our brand new feature RTM plan, the 3 bedroom Avonlea. This is where family-focused design meets traditional detail and old-school craftsmanship. Look forward to animated gatherings around the table, where family devours home-cooked meals, squeezed between homework and hockey practice. Details throughout this home speak of old-world charm and the value of a job well done. Meanwhile, the functional layout and designated spaces are ideal for the modern family of today.

- What was old is new again, with traditional details, like gooseneck faucets in elegant gold, pine ceilings, box moulding, and transoms above doors.
- Tuck that hockey equipment away in the dedicated mud room.
- The well-organized walk-in pantry keeps your abundant countertops clear of clutter.
- A conveniently located laundry room with large sink helps to keep a tidy home.



Western Canada's Most Trusted RTM Home Builder Since 1969

J&H Homes | 2505 Avenue C North, Saskatoon, SK | S7L 6A6 | www.jhhomes.com | 306.652.5322 | info@jhhomes.com

