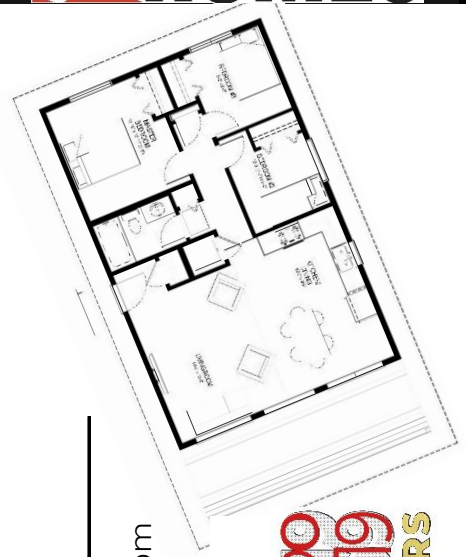


HARPTREE II | 1008 sq.ft.



The HARPTREE II | 42' x 24' | 1008 sq.ft. | 3 Bedrooms | 1 Bathroom

YOUR PLAN OR OURS

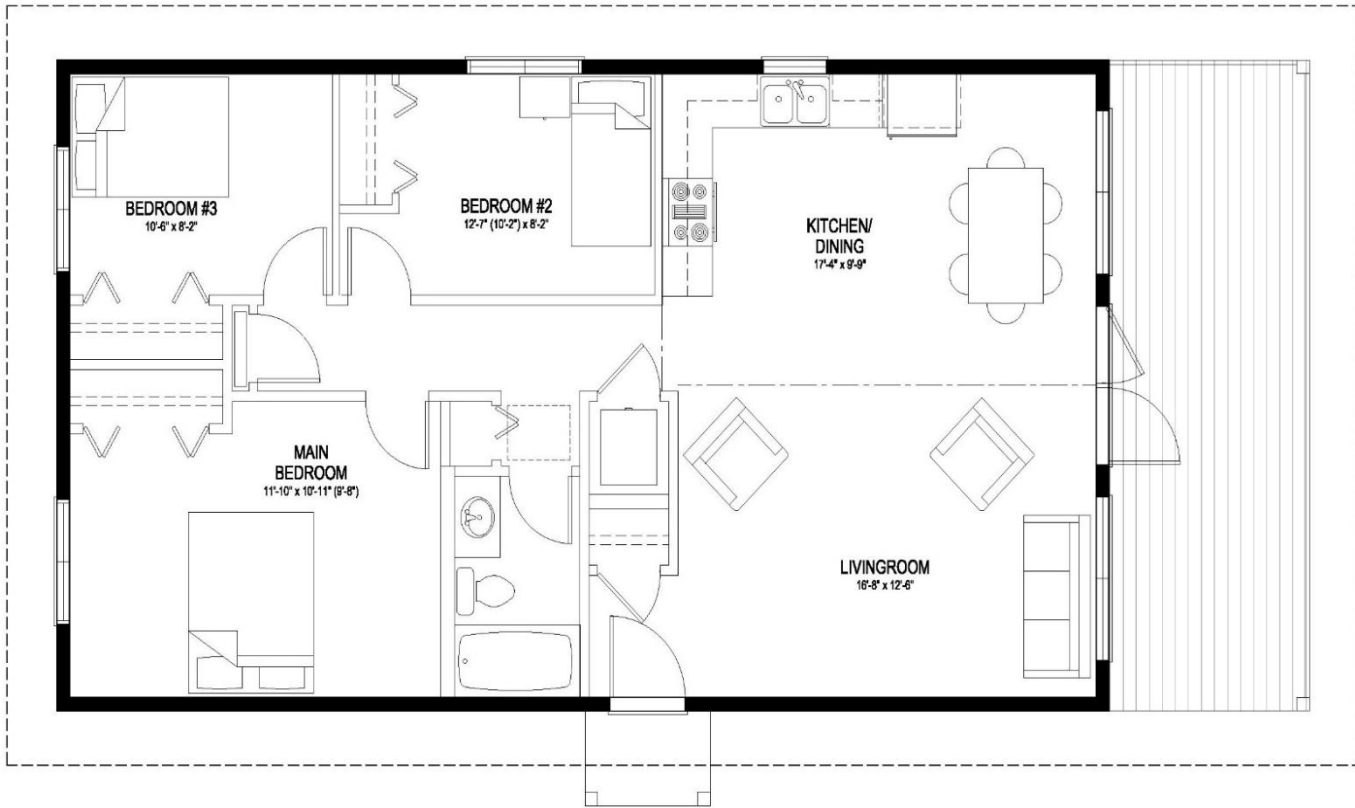
Not exactly what you're looking for?
All plans are fully customizable.

*May be shown with optional features, including, but not limited to material and colours. Overall dimensions shown, excluding verandas.



Western Canada's Most Trusted RTM Home Builder Since 1969

J&H Homes | 2505 Avenue C North, Saskatoon, SK | S7L 6A6 | www.jhhomes.com | 306.652.5322 | info@jhhomes.com



The HARPTREE II

The Retreat

WELCOME to The Harptree II. This 1008 sq.ft. cottage brings you closer to nature, without breaking the budget. With the addition of a 3rd bedroom from than the original Harptree plan, it accommodates families who need a little more elbow room.

- Vaulted ceilings & floor-to-ceiling windows let you enjoy the great outdoors even before you leave the Great Room.
- An extra large covered veranda expands your living space with room to eat *al fresco* and lounge in the shade.
- Main-floor laundry is just one of the comforts of home you won't be missing on your family holidays.



Western Canada's Most Trusted RTM Home Builder Since 1969

J&H Homes | 2505 Avenue C North, Saskatoon, SK | S7L 6A6 | www.jhhomes.com | 306.652.5322 | info@jhhomes.com