

ALAMEDA | 2032 sq.ft.

J&H HOMES



The **ALAMEDA** | 57'X36'6" | 2032 sq.ft. | 3 Bedrooms | 3 Bathrooms

YOUR PLAN OR OURS

Not exactly what you're looking for?
All plans are fully customizable.

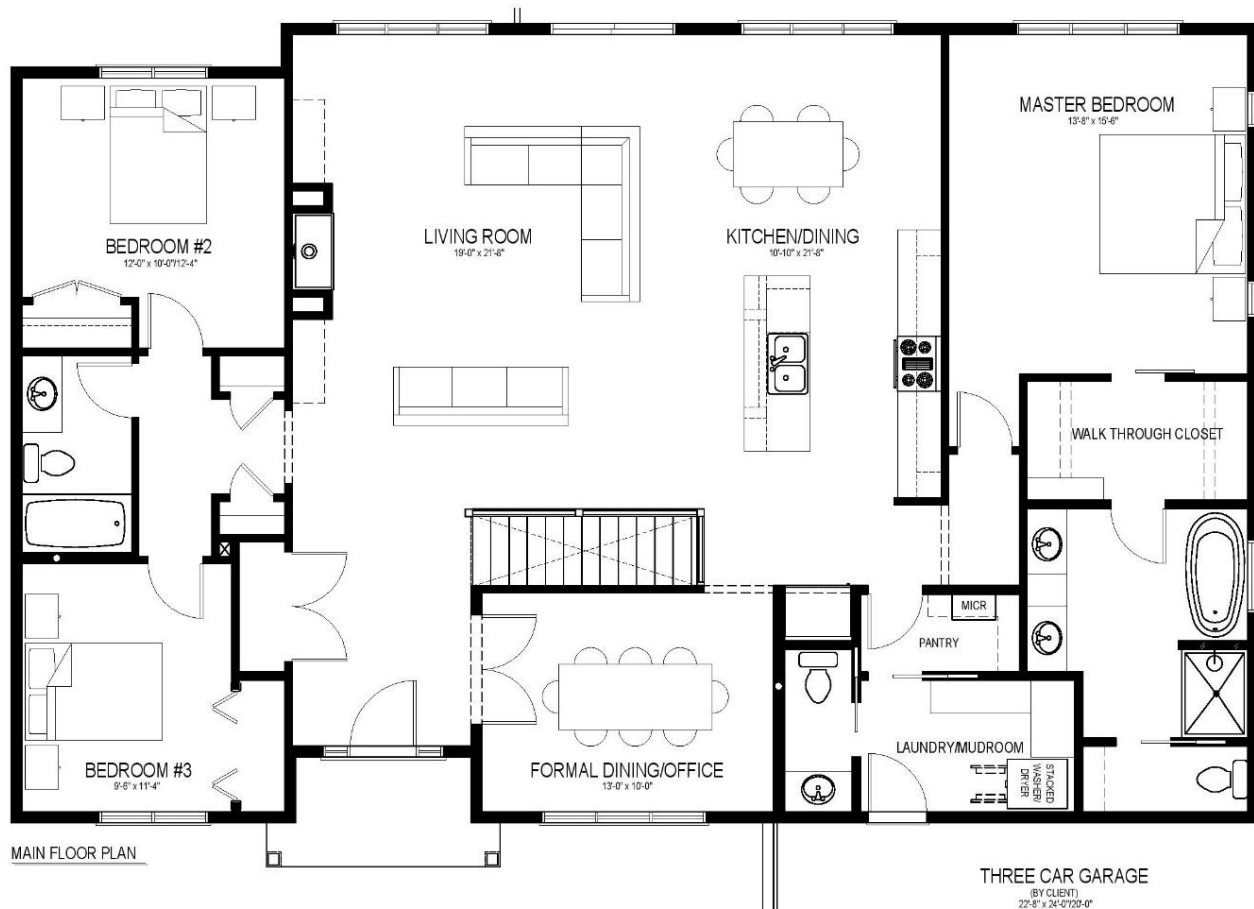
*May be shown with optional features, including, but not limited to material and colours. Overall dimensions shown.

50th
YEARS

J&H HOMES

Western Canada's Most Trusted RTM Home Builder Since 1969

J&H Homes | 2505 Avenue C North, Saskatoon, SK | S7L 6A6 | www.jhhomes.com | 306.652.5322 | info@jhhomes.com



The ALAMEDA

A Modern Farm House

WELCOME HOME to The Alameda. This 2032 sq.ft. plan will be your family's retreat in the country.

- This house is all about entertaining! Vaulted ceilings create an expansive space that joins the kitchen and living room making it perfect for hosting family gatherings
- The formal dining features custom coffered ceilings, creating an elegant space for those special celebrations
- Enjoy your own master suite oasis, featuring a spacious ensuite and walk-through closet.



Western Canada's Most Trusted RTM Home Builder Since 1969

J&H Homes | 2505 Avenue C North, Saskatoon, SK | S7L 6A6 | www.jhhomes.com | 306.652.5322 | info@jhhomes.com