

ELLISBORO | 1549 sq.ft.



The **ELLISBORO** 37'X46' | 1549sq.ft. | 3 Bedrooms | 2 Bathrooms

YOUR PLAN OR OURS

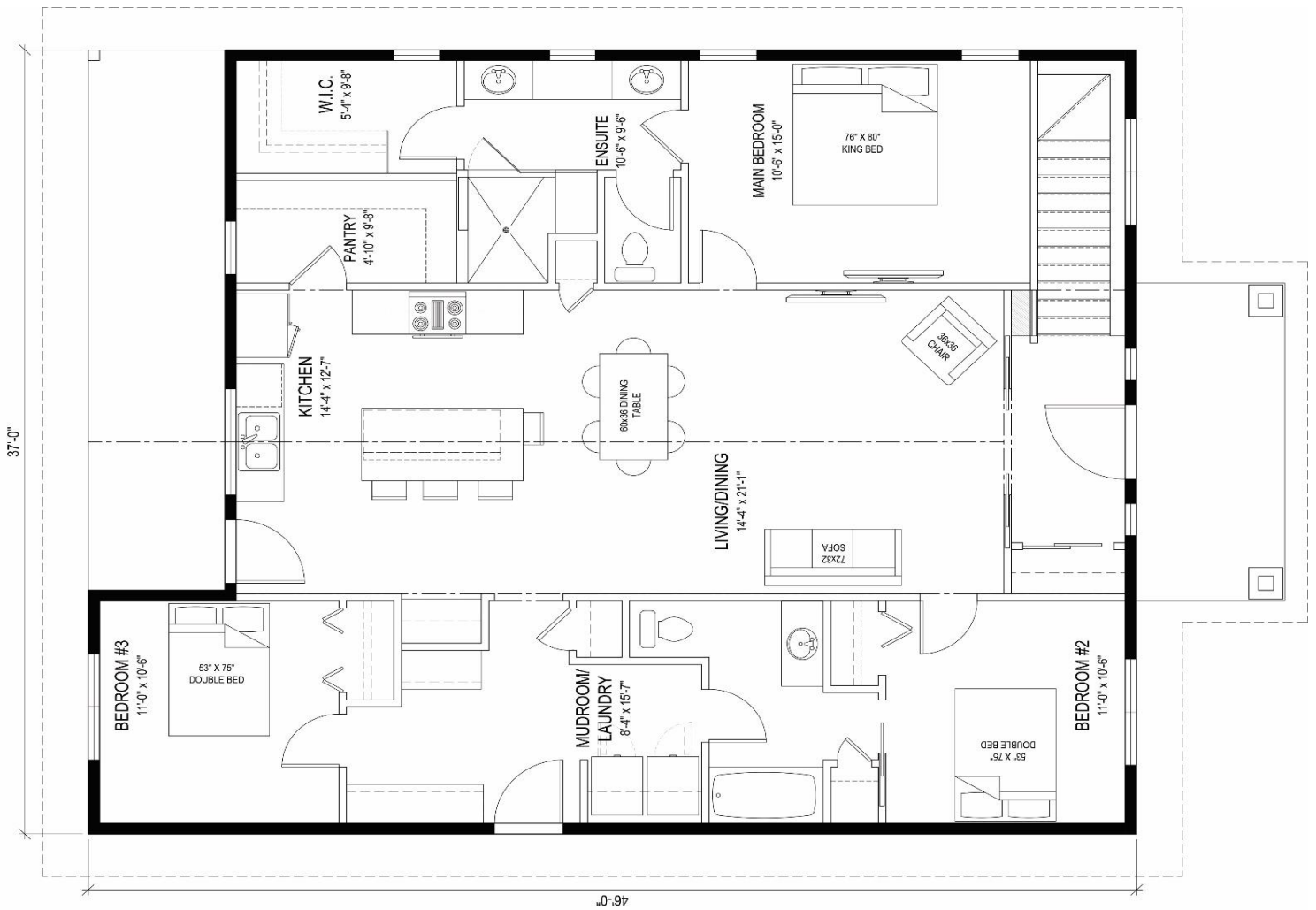
Not exactly what you're looking for?
All plans are fully customizable.

*May be shown with optional features, including, but not limited to material and colours. Overall dimensions shown, excluding verandas.



Western Canada's Most Trusted RTM Home Builder Since 1969

J&H Homes | 2505 Avenue C North, Saskatoon, SK | S7L 6A6 | www.jhhomes.com | 306.652.5322 | info@jhhomes.com



The **ELLISBORO**

The Modest Mansion

WELCOME HOME. With a sprawling, luxury master suite for yourself and a self-contained bedroom wing for the kids, the Ellisboro gives everyone their privacy while staying connected.

- Vaulted ceilings and lots of windows make this 1549 sq.ft. home feel larger. Open the double doors to your foyer to access even more space and light.
- An island with breakfast bar for casual eating, a large walk-in pantry, a designated coffee station: when everything has a place, your kitchen stays clean and organized. With nothing left on the counter, guests will wonder where you store everything!
- Closets, closets, closets! A handy mud room and lots of closets mean storage is not an issue.



Western Canada's Most Trusted RTM Home Builder Since 1969

J&H Homes | 2505 Avenue C North, Saskatoon, SK | S7L 6A6 | www.jhhomes.com | 306.652.5322 | info@jhhomes.com