



The **ELLISBORO** 37'x46' | 1549 sq.ft | 3 Bedrooms | 2 Bathrooms

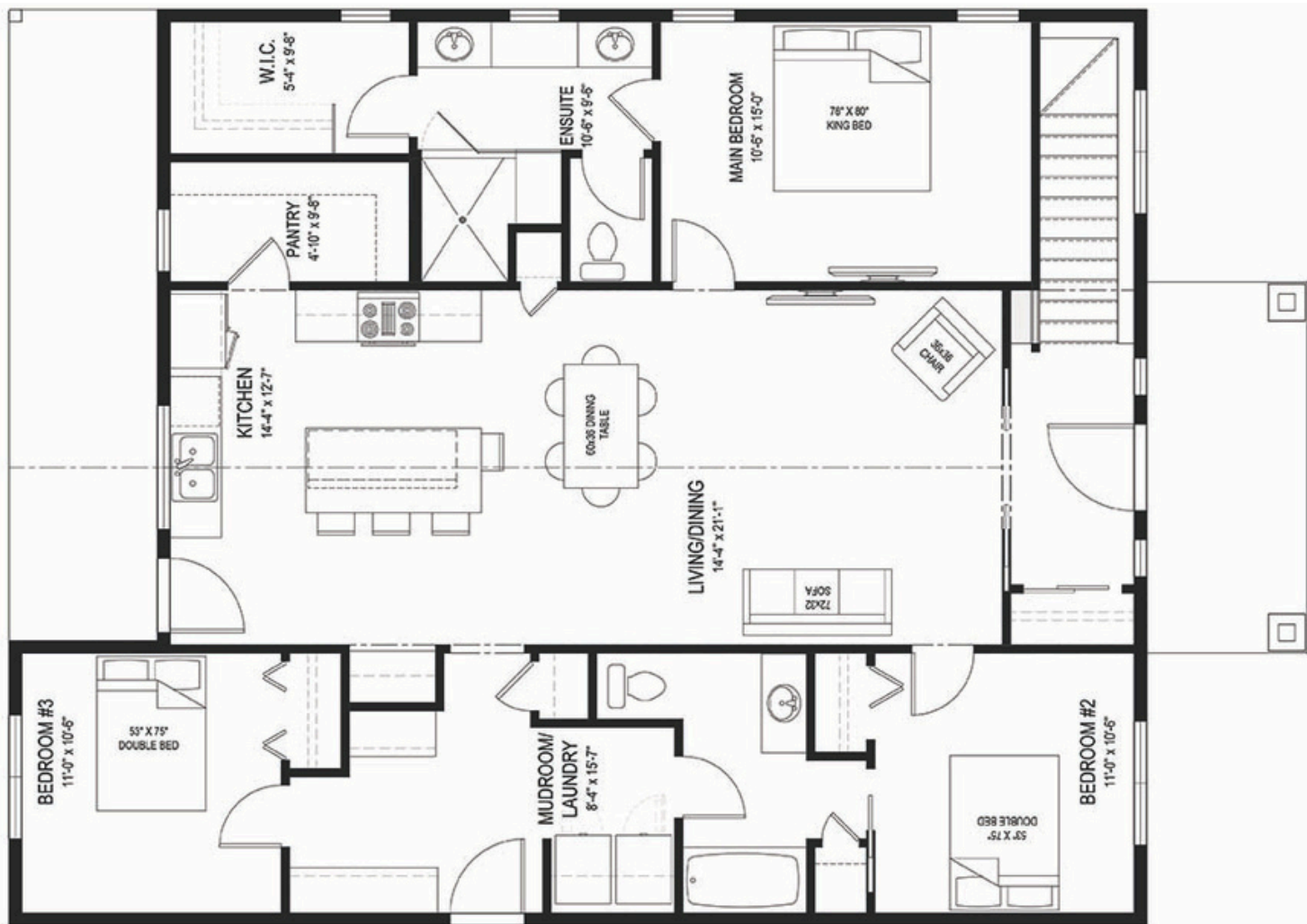
YOUR PLAN OR OURS

Not exactly what you're looking for?
All plans are fully customizable.



55 YEARS
ESTABLISHED 1969

**May be shown with optional features, including, but not limited to material and colours. Overall dimensions shown, excluding verandas.*



A Modern Country Church Conversion

WELCOME HOME. From the moment you enter the front atrium, you'll note the subtle homage this 1549 sq' plan plays to early prairie church architecture.

- Open the double doors to your foyer to access even more space and light.
- A cathedral ceiling spans the length of the house, keeping your living area open.
- Maintain your privacy while staying connected with a sprawling primary suite for you and a self-contained bedroom wing for the kids.
- An island with breakfast bar for casual eating, a large walk-in pantry, a designated coffee station: when everything has a place, your kitchen stays clean and organized. With nothing left on the counter, guests will wonder where you store everything!
- Closets, closets, closets! A handy mud room and lots of closets mean storage is not an issue.



PROFESSIONAL MEMBER

Saskatoon & Region Home Builders' Association



Western Canada's Most Trusted RTM Home Builder Since 1969