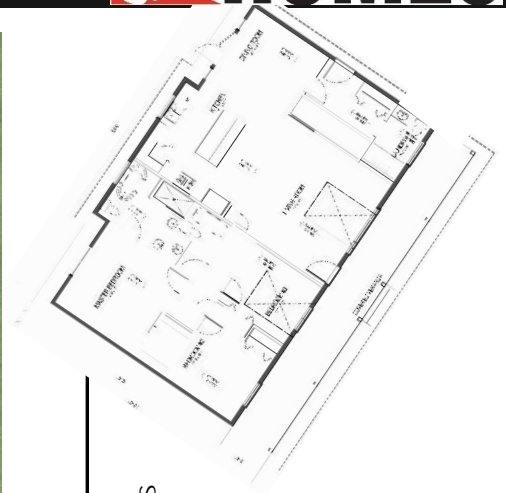


SHAUNAVON I | 1532 sq.ft.

J&H HOMES



The **SHAUNAVON I** | 53'x30' | 1532 sq.ft. | 3 Bedrooms | 3 Bathrooms

YOUR PLAN OR OURS

Not exactly what you're looking for?
All plans are fully customizable.

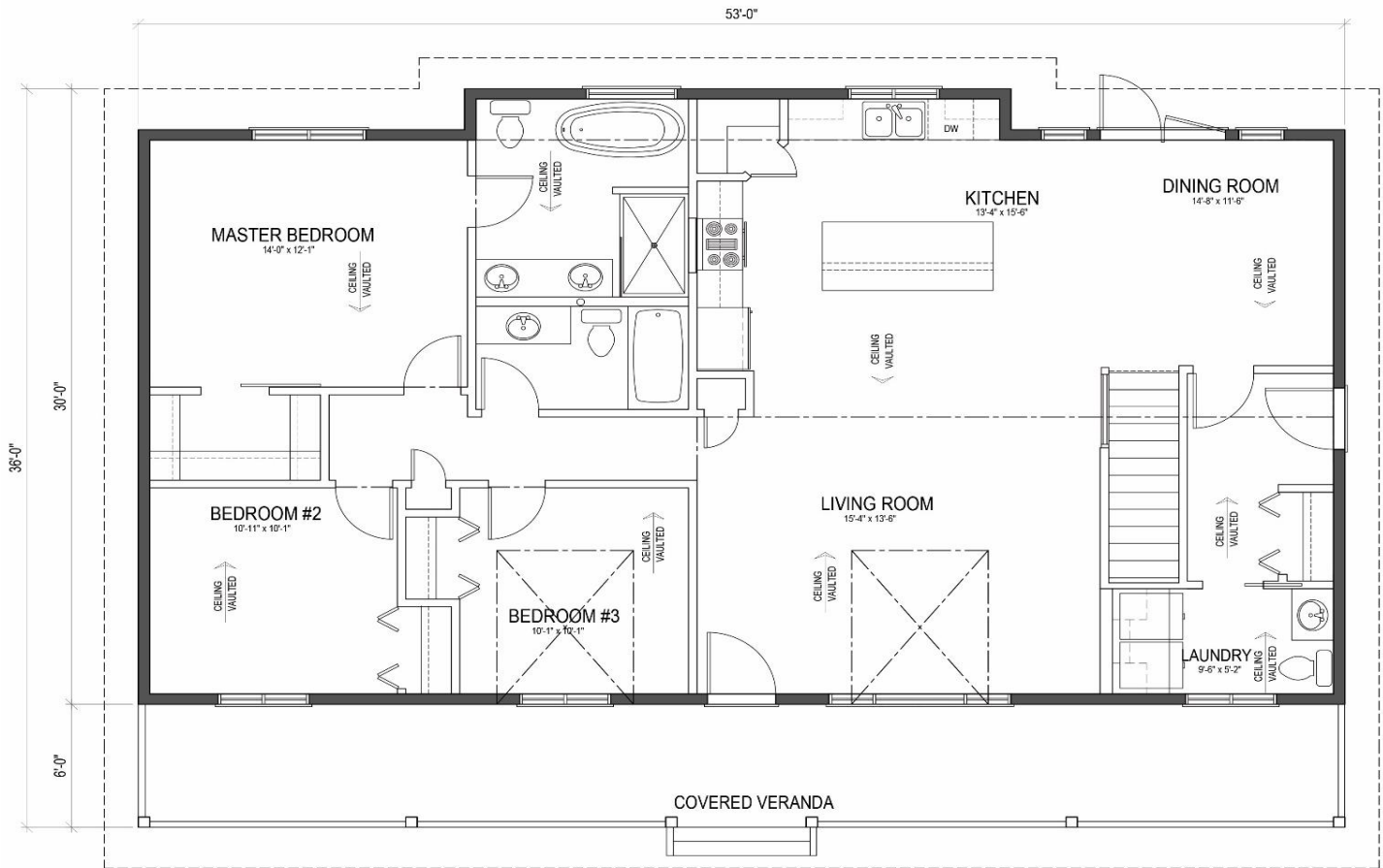
*May be shown with optional features, including, but not limited to material and colours. Overall dimensions shown, excluding verandas.

50th
YEARS

J&H
HOMES

Western Canada's Most Trusted RTM Home Builder Since 1969

J&H Homes | 2505 Avenue C North, Saskatoon, SK | S7L 6A6 | www.jhhomes.com | 306.652.5322 | info@jhhomes.com



The SHAUNAVON I

The Prairie Ranch

WELCOME HOME to The Shaunavon I, one of our most popular plans. With lots of room to breathe, natural light, & space for everyone, its popularity is no surprise.

- Vaulted ceilings make the 1532 sq.ft. footprint feel even larger.
- The covered veranda has lots of room to follow the shade as you enjoy your view.
- The Primary Suite is all about you... right down to the free-standing tub.
- Easy-access mud room / laundry / bathroom off your future garage.
- Your living space is further expanded with garden door access to your backyard.



Western Canada's Most Trusted RTM Home Builder Since 1969

J&H Homes | 2505 Avenue C North, Saskatoon, SK | S7L 6A6 | www.jhhomes.com | 306.652.5322 | info@jhhomes.com