



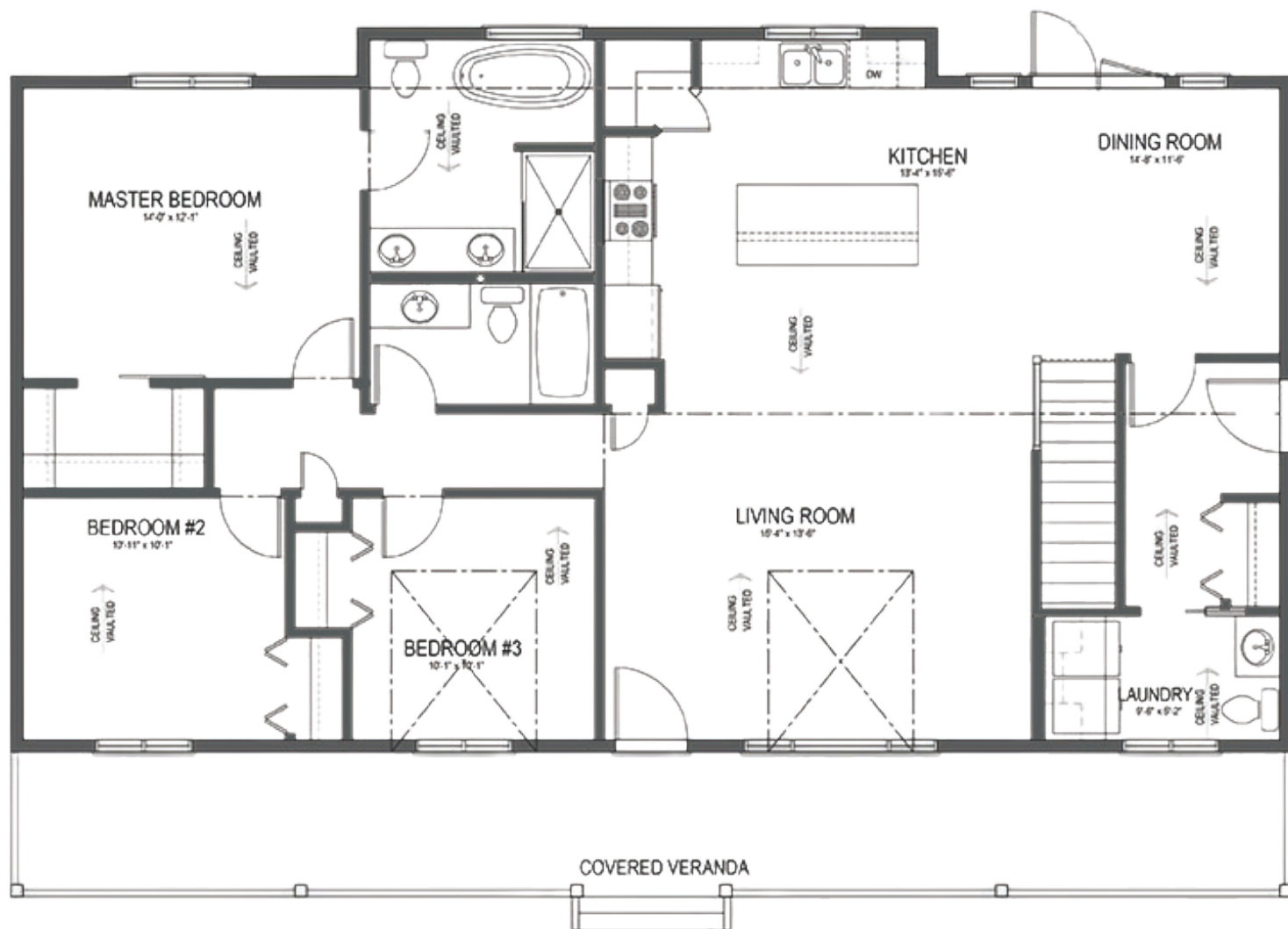
**The SHAUNAVON I** 53'x30' | 1532 sq.ft. | 3 Bedrooms | 3 Bathrooms

**YOUR PLAN OR OURS**  
Not exactly what you're looking for?  
All plans are fully customizable.



**55 YEARS**  
ESTABLISHED 1969

\*May be shown with optional features, including, but not limited to material and colours. Overall dimensions shown, excluding verandas.



## The Prairie Ranch

**WELCOME HOME** to the Shaunavon I, one of our most popular plans. With lots of room to breathe, natural light, and space for everyone, its popularity is no surprise.

- Vaulted ceilings make the 1532 sq.ft. footprint feel even larger.
- The covered veranda has lots of room to follow the shade as you enjoy your view.
- The primary suite is all about you... right down to the freestanding tub.
- Easy-access mud room / laundry / bathroom off your future garage.
- Your living space is further expanded with garden door access to your backyard.



**Western Canada's Most Trusted RTM Home Builder Since 1969**

J&H Homes | 2505 Ave C North, Saskatoon, SK | S7L 6A6 | [www.jhhomes.com](http://www.jhhomes.com) | 306.652.5322 | [info@jhhomes.com](mailto:info@jhhomes.com)