



The HARPTREE II 42'x24' | 1008 sq.ft | 3 Bedrooms | 1 Bathroom

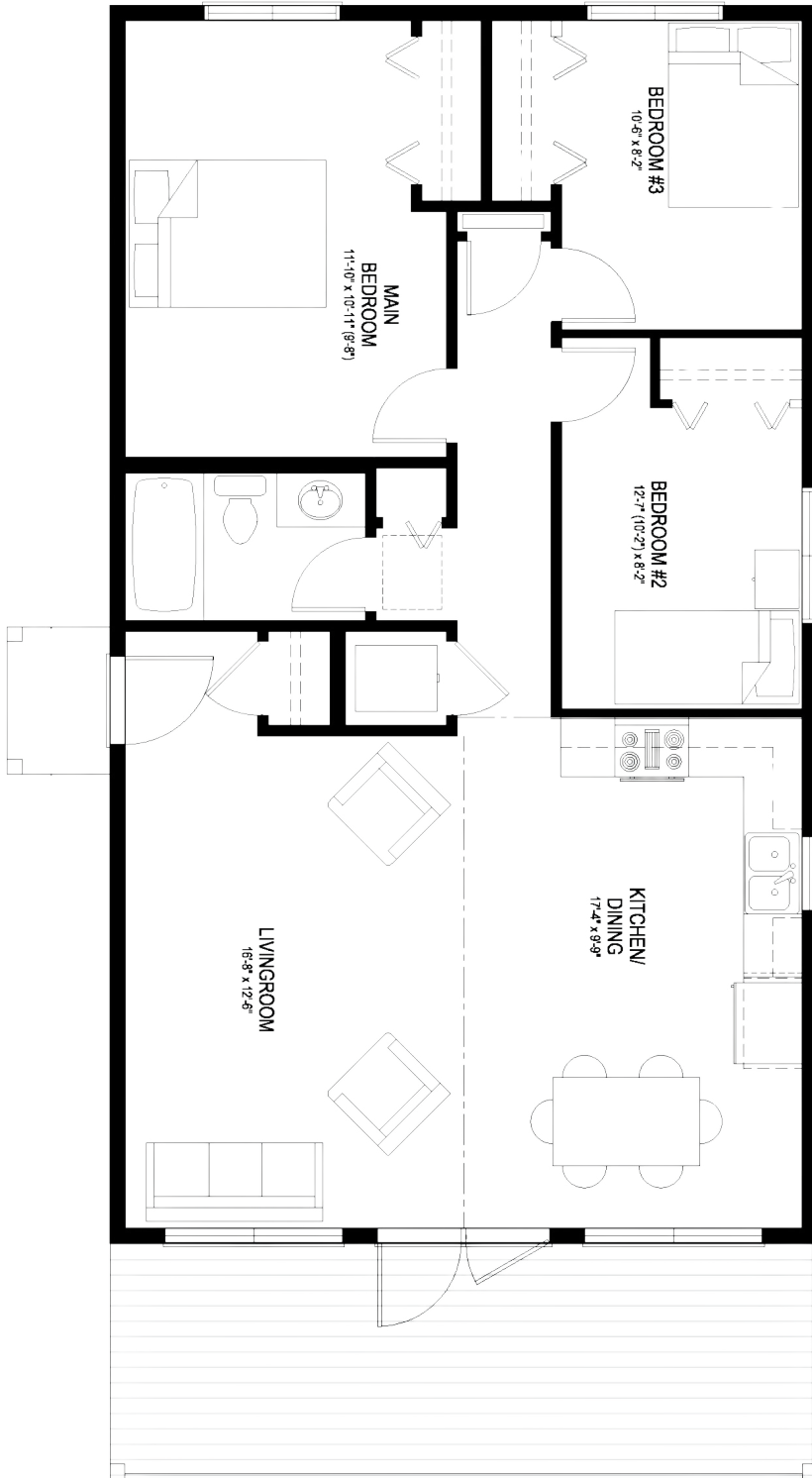
YOUR PLAN OR OURS

Not exactly what you're looking for?
All plans are fully customizable.



55 YEARS
ESTABLISHED 1969

**May be shown with optional features, including, but not limited to material and colours. Overall dimensions shown, excluding verandas.*



The Retreat

WELCOME to the Harptree II. This 1008 sq.ft. cottage brings you closer to nature, without breaking the budget. With the addition of a 3rd bedroom, this plan accommodates families who need a little more elbow room than what the Harptree I offers.

- Vaulted ceilings and floor-to-ceiling windows let you enjoy the great outdoors even before you leave the Great Room.
- An extra large covered veranda expands your living space with room to eat *al fresco* and lounge in the shade.
- Main-floor laundry is just one of the comforts of home you won't be missing on your family holidays.

Need less space?

See our 888 sq.ft. 2 bedroom Harptree I plan.



PROFESSIONAL MEMBER

Saskatoon & Region Home Builders' Association



Western Canada's Most Trusted RTM Home Builder Since 1969