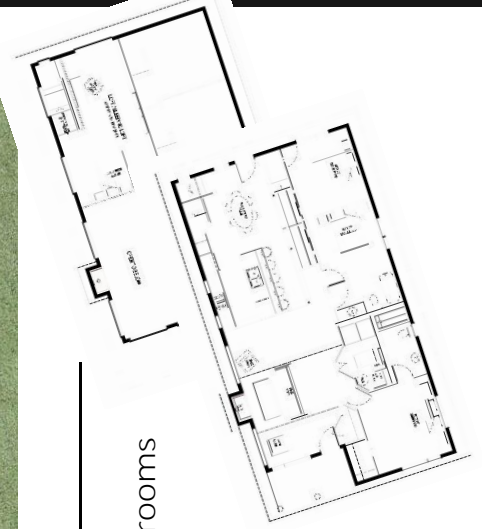


STOCKHOLM 1.5 | 1736 sq.ft.



The **STOCKHOLM 1.5** | 52'X28' | 1736 sq.ft. | 4 Bedrooms | 2 Bathrooms  
\$234,208\*

**YOUR PLAN OR OURS**

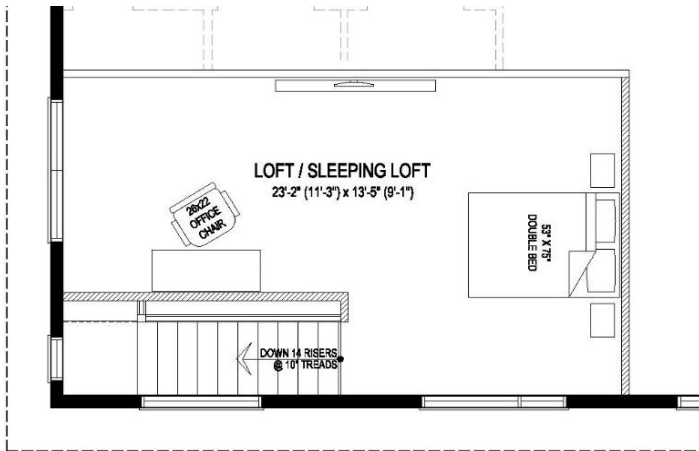
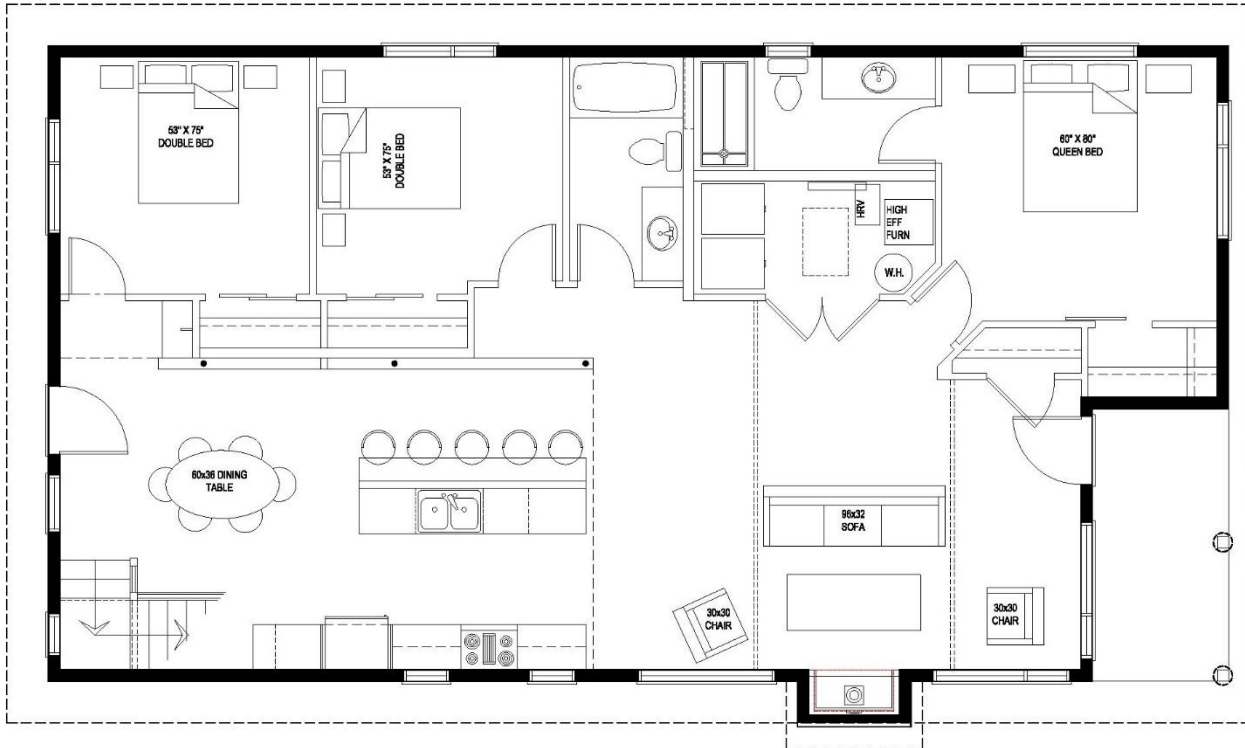
Not exactly what you're looking for?  
All plans are fully customizable.

\*May be shown with optional features, including, but not limited to material and colours. Overall dimensions shown, excluding verandas.



Western Canada's Most Trusted RTM Home Builder Since 1969

J&H Homes | 2505 Avenue C North, Saskatoon, SK | S7L 6A6 | www.jhhomes.com | 306.652.5322 | info@jhhomes.com



The STOCKHOLM  
*Where Nature Meets Luxury*

WELCOME HOME to The Stockholm 1.5. This 1736 sq.ft. cottage plan has it all, with vaulted ceilings, floor-to-ceiling windows, gas fireplace, and a flexible loft area for extra living space or a 4th bedroom.

- Your master suite, complete with walk-in closet and 3-piece bath is tucked away from the hub of family activity.
- A convenient gas fireplace lets you cosy up to a fire on colder nights..
- The open kitchen/dining/living room makes for seamless family gatherings and generations of family memories.
- Endless windows allow you to enjoy nature as easily from your couch as you can from your veranda.



Western Canada's Most Trusted RTM Home Builder Since 1969

J&H Homes | 2505 Avenue C North, Saskatoon, SK | S7L 6A6 | www.jhhomes.com | 306.652.5322 | info@jhhomes.com