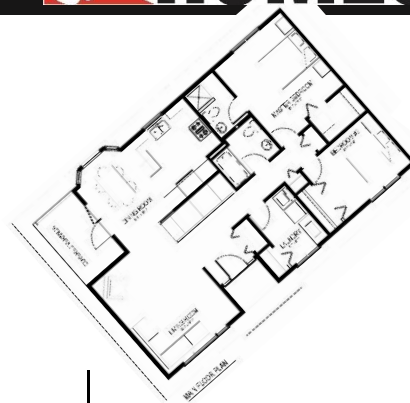


AVONLEA | 1167 sq.ft.

J&H HOMES



The **AVONLEA** | 45'X28' | 1167 sq.ft. | 2 Bedrooms | 2 Bathrooms

\$133,951*

YOUR PLAN OR OURS

Not exactly what you're looking for?
All plans are fully customizable.

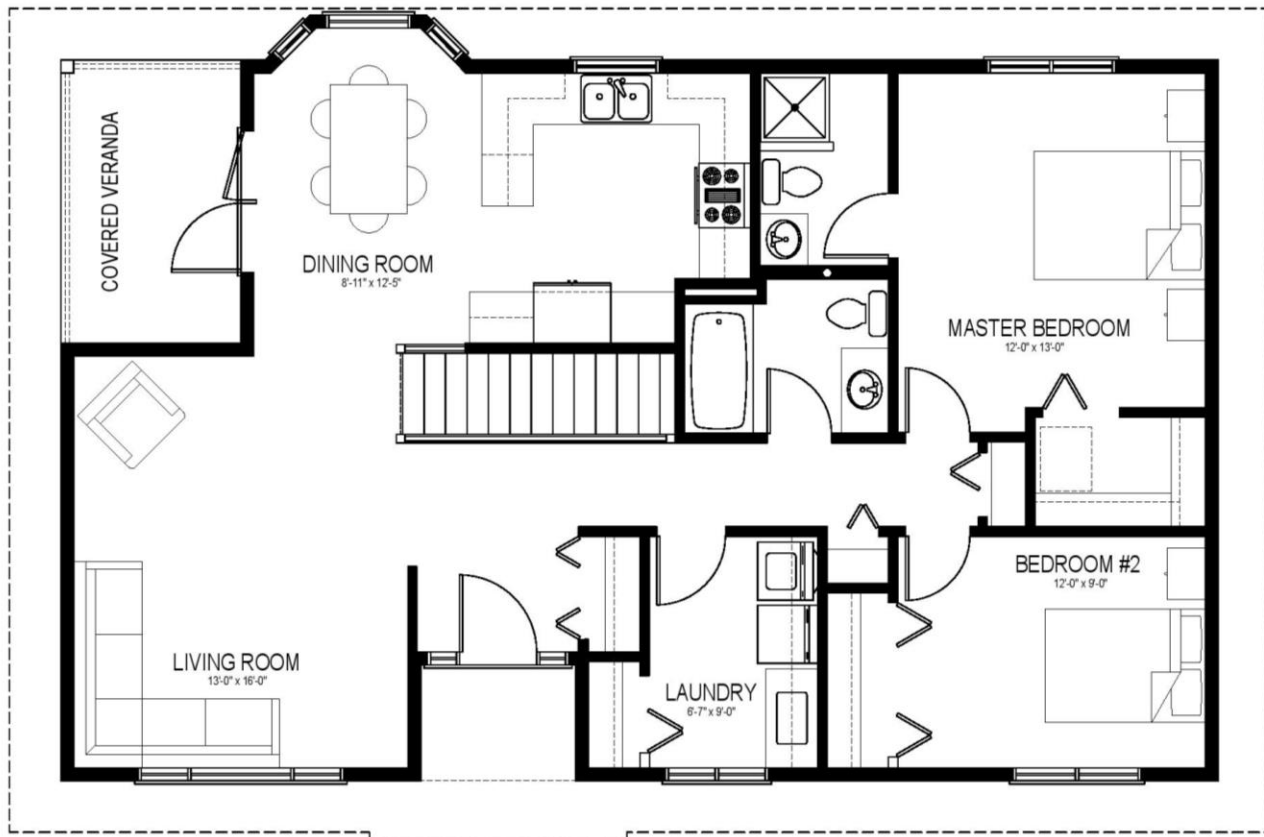
*May be shown with optional features, including, but not limited to material and colours. Overall dimensions shown, excluding verandas.



50th
YEARS

Western Canada's Most Trusted RTM Home Builder Since 1969

J&H Homes | 2505 Avenue C North, Saskatoon, SK | S7L 6A6 | www.jhhomes.com | 306.652.5322 | info@jhhomes.com



MAIN FLOOR PLAN

The AVONLEA

Small Family with Big Living

WELCOME HOME to The Avonlea. Enjoy a quiet coffee on your private veranda or soak in the morning light through a cozy bay window. If this sounds like you, The Avonlea is what you're looking for.

- With only 2 bedrooms, the 1167 sq.ft. footprint allows for lots of living space and a Master Suite just for you.
- A huge living room gives you a flexible space that can be used in countless ways.
- The extra large laundry room helps to keep a tidy home.



Western Canada's Most Trusted RTM Home Builder Since 1969

J&H Homes | 2505 Avenue C North, Saskatoon, SK | S7L 6A6 | www.jhnhomes.com | 306.652.5322 | info@jhnhomes.com