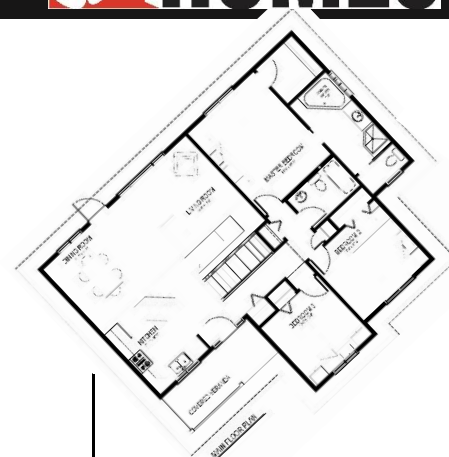


ASPEN I | 1310 sq.ft.

J&H HOMES



The **ASPEN I** | 45'X36' | 1310 sq.ft. | 3 Bedrooms | 2 Bathrooms
\$179,310*

YOUR PLAN OR OURS

Not exactly what you're looking for?
All plans are fully customizable.

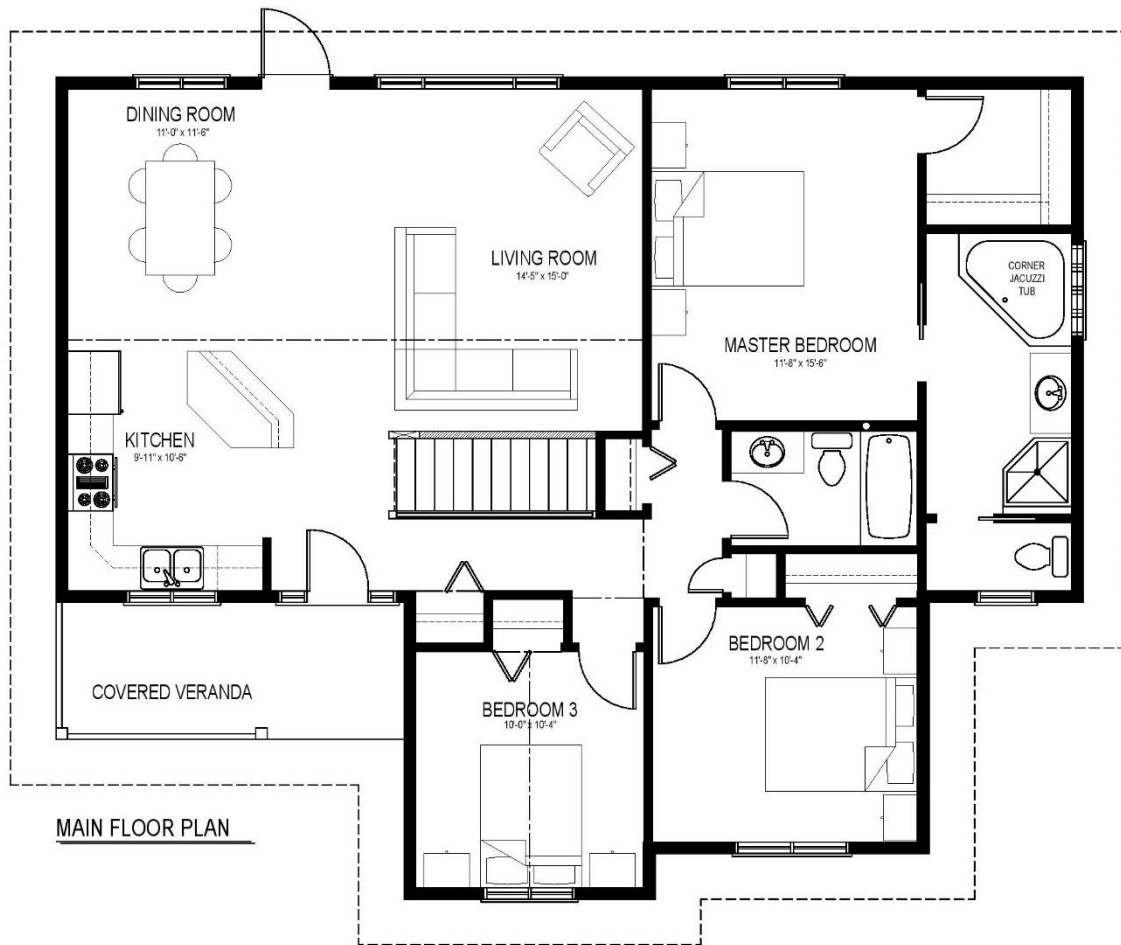
*May be shown with optional features, including, but not limited to material and colours. Overall dimensions shown, excluding verandas.

50th
YEARS

J&H HOMES

Western Canada's Most Trusted RTM Home Builder Since 1969

J&H Homes | 2505 Avenue C North, Saskatoon, SK | S7L 6A6 | www.jhhomes.com | 306.652.5322 | info@jhhomes.com



The ASPEN I

The Entertainers' Craftsman

WELCOME HOME to The Aspen I. This 1310sq.ft. lets you entertain into the night while the kids sleep soundly, with a separate "bedroom wing".

- The party starts at the front door with an attractive covered veranda, entering into the large Great Room.
- Vaulted ceilings show off your new space, as you host those large family gatherings in your large living area.
- You won't miss any of the action as you prepare dinner at the corner kitchen island.
- When the party is over, relax in your huge Master Retreat, complete with walk-in closet, corner jet tub, and separate shower.



Western Canada's Most Trusted RTM Home Builder Since 1969

J&H Homes | 2505 Avenue C North, Saskatoon, SK | S7L 6A6 | www.jhhomes.com | 306.652.5322 | info@jhhomes.com

ASPEN II | 1478 sq.ft.

J&H HOMES



The **ASPEN II** | 47' X 36' | 1248 sq.ft. | 3 Bedrooms | 2 Bathrooms
\$188,673*

YOUR PLAN OR OURS

Not exactly what you're looking for?
All plans are fully customizable.

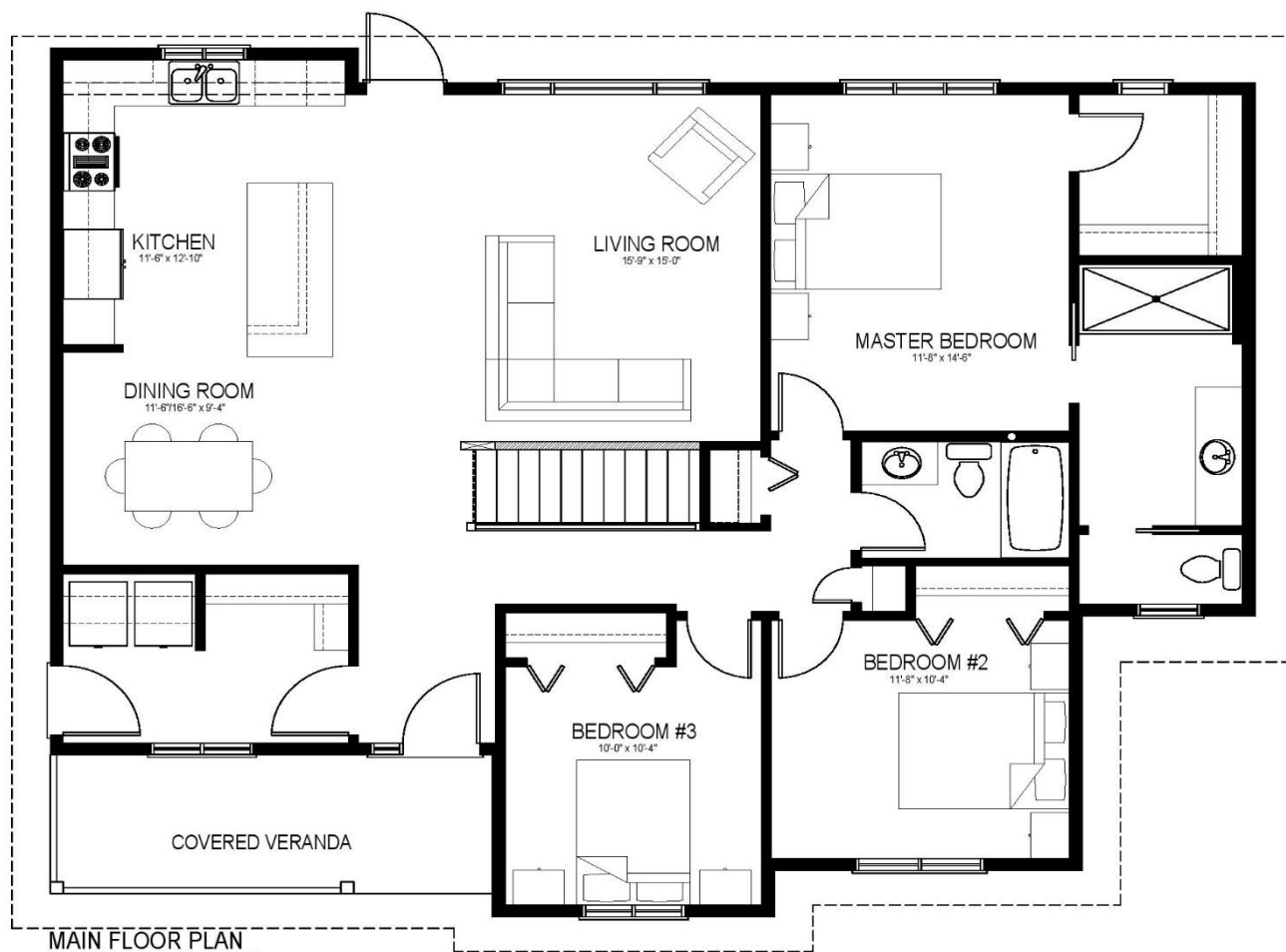
*May be shown with optional features, including, but not limited to material and colours. Overall dimensions shown, excluding verandas.

50²⁹
YEARS

J&H HOMES

Western Canada's Most Trusted RTM Home Builder Since 1969

J&H Homes | 2505 Avenue C North, Saskatoon, SK | S7L 6A6 | www.jhhomes.com | 306.652.5322 | info@jhhomes.com



The ASPEN II

The Entertainers' Craftsman 2.0

WELCOME HOME to The Aspen II. Like the Aspen I plan, this larger, 1478sq.ft., version lets you entertain into the night while the kids sleep soundly, with a separate "bedroom wing". Upgraded for modern family life, this plan adds direct access to your future garage through a smart mudroom/ laundry room.

- The party starts at the front door with an attractive covered veranda, entering into the large Great Room.
- Vaulted ceilings show off your new space, as you host those large family gatherings in your large living area.
- When the party is over, relax in your huge Master Retreat, complete with Aspen II upgrades, like larger walk-in closet & vanity, and over-sized shower.



Western Canada's Most Trusted RTM Home Builder Since 1969

J&H Homes | 2505 Avenue C North, Saskatoon, SK | S7L 6A6 | www.jhhomes.com | 306.652.5322 | info@jhhomes.com