

ALAMEDA | 1972 sq.ft.



The **ALAMEDA** | 57'X34'X37' | 1972 sq.ft. | 3 Bedrooms | 3 Bathrooms

\$286,650*



YOUR PLAN OR OURS

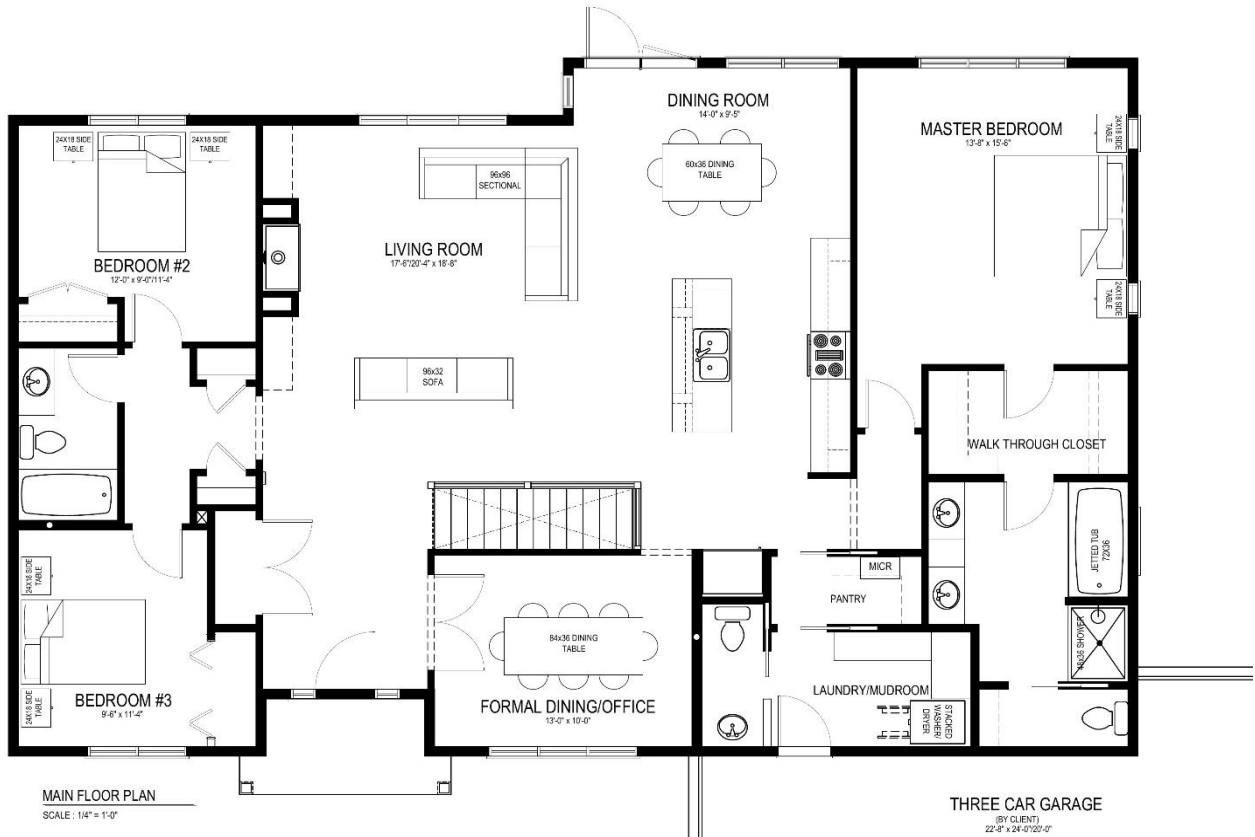
Not exactly what you're looking for?

All plans are fully customizable.

*May be shown with optional features, including, but not limited to material and colours.



ALAMEDA PLAN | 57' X 32' X 37' | 1972 SQ.FT.



The ALAMEDA

A Modern Farm House

WELCOME HOME to The Alameda. This 1972 sq.ft. plan will be your family's retreat in the country.

- This house is all about entertaining! Vaulted ceilings create an expansive space that joins the kitchen and living room making it perfect for hosting family gatherings
- The formal dining features custom coffered ceilings creating an elegant space for those special celebrations
- Enjoy your own master suite oasis featuring a spacious ensuite and walk-through closet.



Western Canada's Most Trusted RTM Home Builder Since 1969

J&H Homes | 2505 Avenue C North, Saskatoon, SK | S7L 6A6 | www.jhhomes.com | 306.652.5322 | info@jhhomes.com