

STOCKHOLM I | 1226 sq.ft.



The **STOCKHOLM** | 46'X28' | 1226 sq.ft. | 3 Bedrooms | 2 Bathrooms



**YOUR PLAN OR OURS**

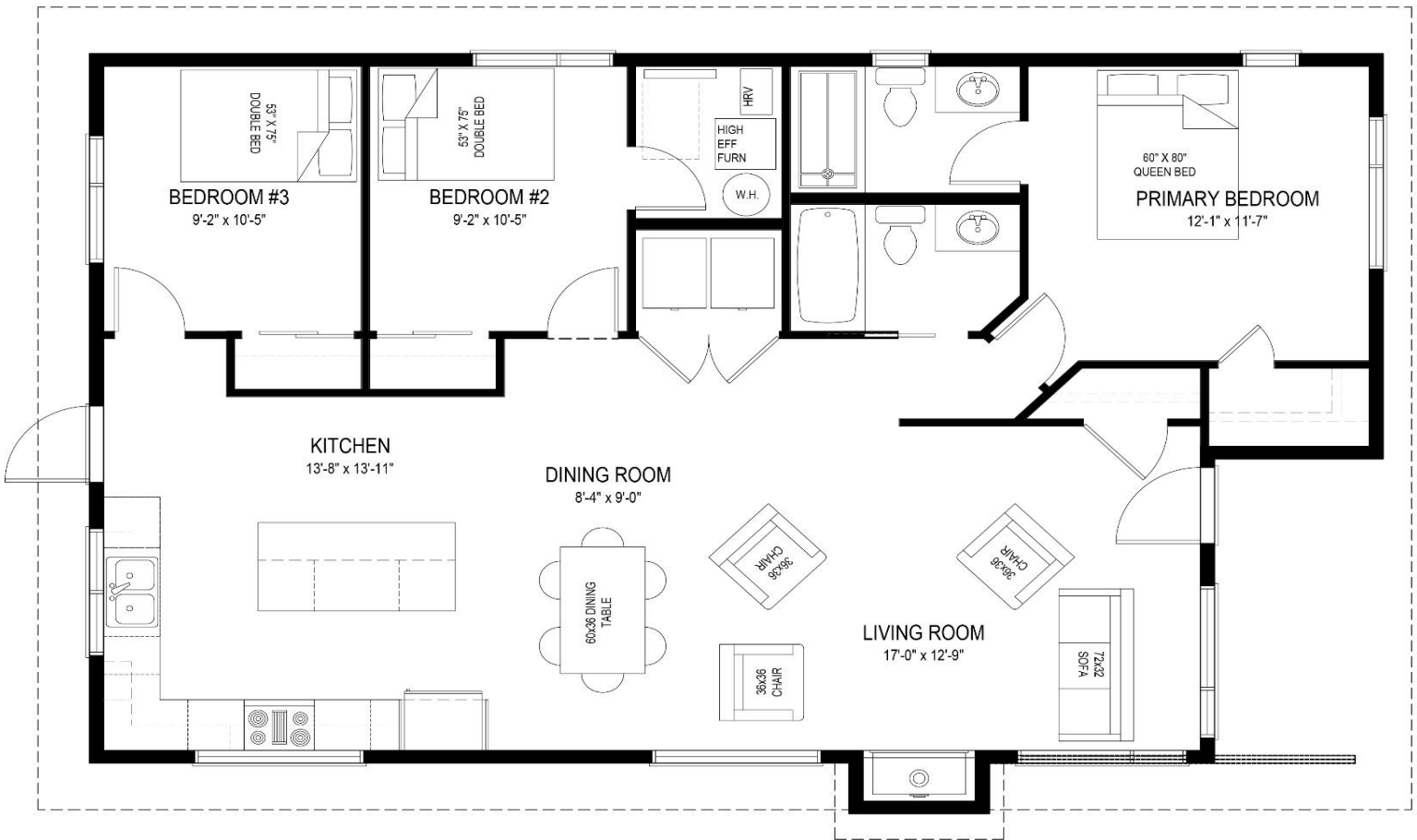
Not exactly what you're looking for?  
All plans are fully customizable.

\*May be shown with optional features, including, but not limited to material and colours. Overall dimensions shown, excluding verandas.



Western Canada's Most Trusted RTM Home Builder Since 1969

J&H Homes | 2505 Avenue C North, Saskatoon, SK | S7L 6A6 | www.jhhomes.com | 306.652.5322 | info@jhhomes.com



## The STOCKHOLM I

*Where Nature Meets Luxury*

WELCOME HOME to The Stockholm I. This 1226 sq.ft. cottage plan will have you the moment you step inside, with 17' ceilings, floor-to-ceiling windows, exposed beams, and natural gas fireplace.

- Exposed beams and walls of windows in the great room pay homage to the nature that surrounds your cottage.
- Your primary suite, complete with walk-in closet and 3-piece bath, is tucked away from the hub of family activity.
- A convenient gas fireplace lets you cosy up to a fire on colder nights.
- The large kitchen & dining room make for seamless family gatherings and generations of family memories.



Western Canada's Most Trusted RTM Home Builder Since 1969

J&H Homes | 2505 Avenue C North, Saskatoon, SK | S7L 6A6 | [www.jhhomes.com](http://www.jhhomes.com) | 306.652.5322 | [info@jhhomes.com](mailto:info@jhhomes.com)