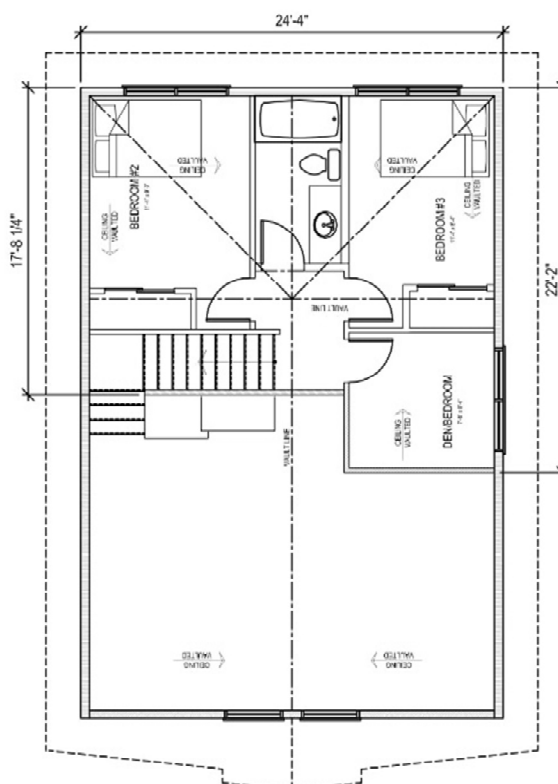
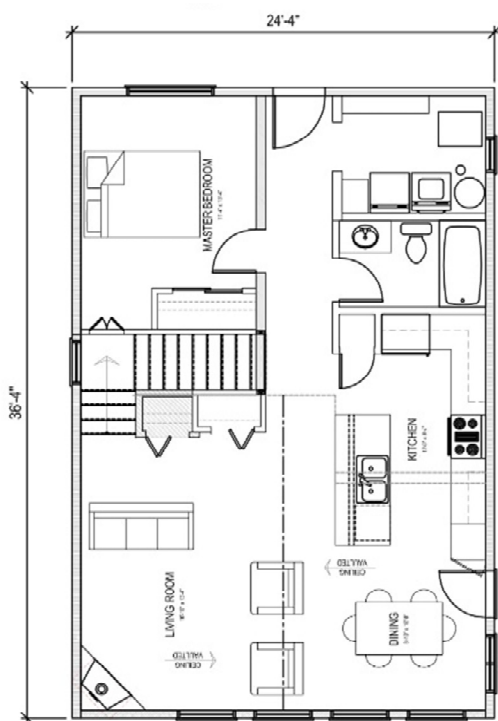




3 Bedrooms | 2 Bathrooms | 1320 sq.ft.

Fireplace | Large living room | Vaulted Ceilings |



PALO

36'4" X 24'4"

1320 sq.ft.

\$197,806.67

Actual plans may not be exactly as shown, and can be modified to suit your needs

Western Canada's Most Trusted RTM Home Builder Since 1969

J&H Homes, 2505 Ave C North, Saskatoon, SK S7L 6A6; www.jhhomes.com; Phone- 306-652-5322



19-Dec-18

J&H BUILDER'S WAREHOUSE, SASKATOON, SK - STANDARD R.T.M. HOME SPECIFICATIONS

FINISH MATERIAL

SHELVING & RODS (MDF painted wall color)

LIGHT FIXTURES INSTALLED - includes 10 LED pot lites & fan in open area

PAINTING - 1 Primer & 2 finish coats

COMPLETE PLUMBING

BATH ACCESSORIES

WASHER PLUMBING & DRYER OUTLET

TAPING & TEXTURING CEILING

KITCHEN CUPBOARDS & COUNTER TOPS - Superior Millwork

FLOOR COVERINGS

MIRRORS

4 CENTRAL VAC OUTLET

4 TV OUTLETS

4 TELEPHONE OUTLETS

EAVESTROUGHING

HOME OPTIONS INCLUDED IN PRICING

NAT GAS FIREPLACE standard finish (includes wood mantel)

CEMENT FIBRE SIDING ON EXTERIOR W/ TRIMS & ARCH. ACCESSORIES

VAULTED CEILING

SINGLE GARDEN DOOR

ROCK ON CHIMNEY CHASE

TILE FOR BACKSPLASH

STAINED PINE CEILING IN KITCHEN/HALLWAY

RAILING/GUARDRAIL AT STAIRWELL

ISLAND IN KITCHEN 36" X 66"

TOTAL

\$197,806.67

GARAGE NOT INCLUDED

PRICES ARE SUBJECT TO CHANGE WITHOUT NOTICE, TAXES NOT INCLUDED.

