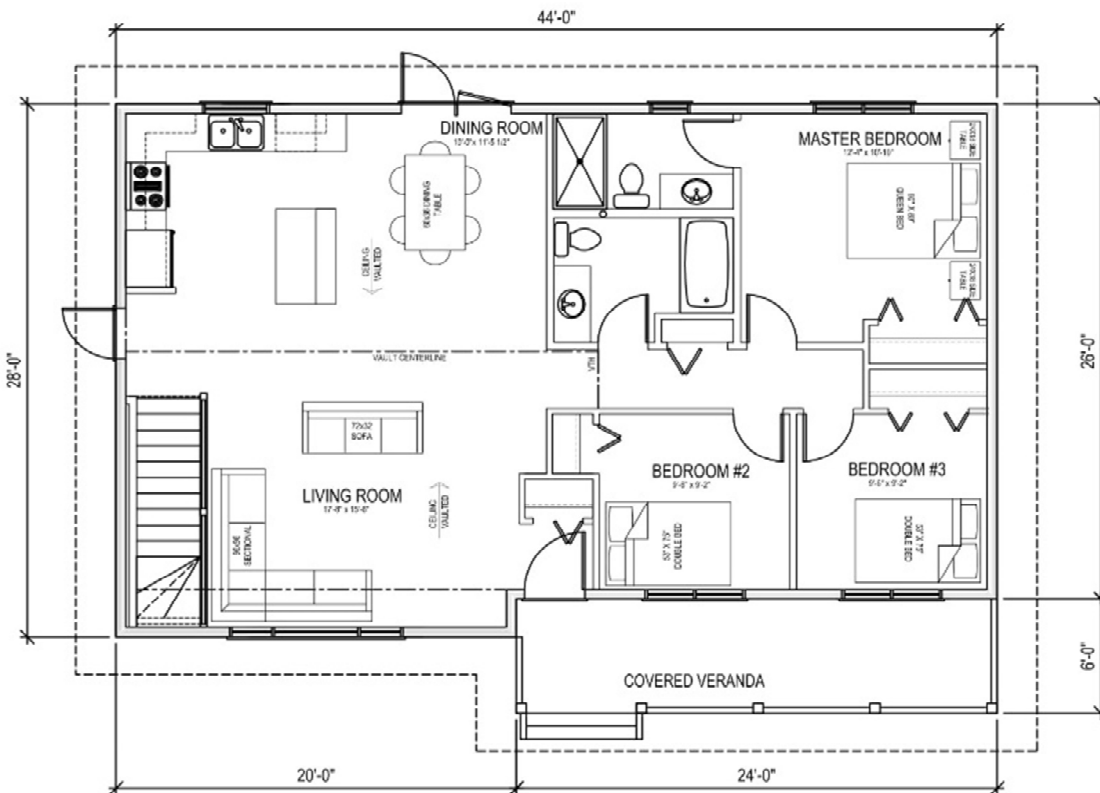




**3 Bedrooms | 2 Bathrooms | 1128sq.ft.**

Ensuite with tiled shower | Large living room | Vaulted Ceilings | Optional veranda



**WILLOWBROOK II**

28'X26'X42'  
+ Veranda  
1128 sq.ft.  
\$135,443.21

Actual plans may not be exactly as shown, and can be modified to suit your needs

**Western Canada's Most Trusted RTM Home Builder Since 1969**

J&H Homes, 2505 Ave C North, Saskatoon, SK S7L 6A6; [www.jhhomes.com](http://www.jhhomes.com); Phone- 306-652-5322



# WILLOWBROOK II PLAN | 28' X 26' X 40' | 1184 SQ.FT.

14-Nov-18

## J&H BUILDER'S WAREHOUSE, SASKATOON, SK - STANDARD R.T.M. HOME SPECIFICATIONS

### FINISH MATERIALS

#### SHELVING & RODS

LIGHT FIXTURES INSTALLED - includes 4 lights in living room

PAINTING - Interior (1 primer and 2 finish coats)

COMPLETE PLUMBING - Main Bath & 3/4 Bath w/shower door

#### MIRRORS

#### BATH ACCESSORIES

#### TAPING & TEXTURING CEILING

CABINETS & COUNTERTOPS - Superior Millwork , Laminate c-top, Kitchen island

#### FLOOR COVERINGS

UPGRADE WINDOWS - Triple Pane HS2A

TILE ABOVE KITCHEN BACKSPLASH

2 TV OUTLETS

2 TELEPHONE OUTLETS

1 CENTRAL VAC OUTLET

DOUBLE GARDEN DOORS

VAULTED CEILING IN LIVING ROOM, DINING, AND KITCHEN

KITCHEN ISLAND

HALF WALL AT STAIRWELL

COVERED VERANDA

60" X 36" TILED WALL SHOWER

EAVESTROUGHING

TOTAL

\$135,443.21

\*GARAGE NOT INCLUDED\*

PRICES ARE SUBJECT TO CHANGE WITHOUT NOTICE, TAXES NOT INCLUDED.

