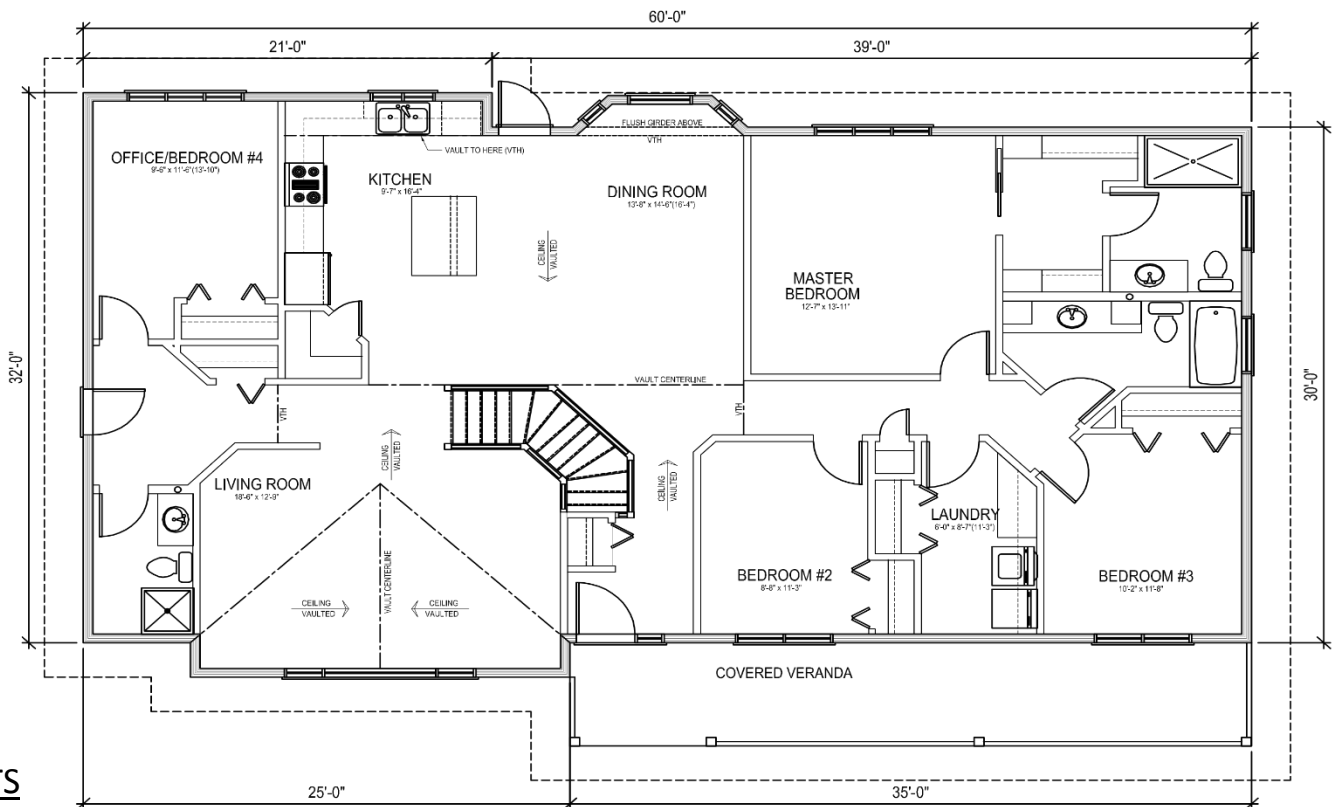




# The Spiritwood - 1894 Sq. Ft.



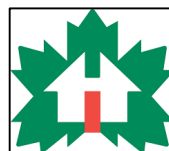
2505 Ave C N  
Saskatoon, Sask  
(306) 652-5322  
[www.jhhomes.com](http://www.jhhomes.com)

## HIGHLIGHTS

- Laundry room
- Bedroom 4/ office
- Walk in pantry
- Optional stone on exterior

**J&H Homes...Western Canada's Most Trusted RTM Home Builder Since 1969**

Actual plans may not be exactly as shown, and can be modified to suit your needs.



March 9, 2017

**SPIRITWOOD PLAN - 34' X 30' X 60' + VERANDA**  
**1894 SQ. FT.**

**J & H BUILDERS WAREHOUSE, SASKATOON, SK - STANDARD R.T.M. HOME SPECIFICATIONS**

FINISH MATERIAL

SHELVING & RODS

LIGHT FIXTURES INSTALLED - includes 6 kitchen pot lights & 4 in living room

PAINTING - 1 Primer & 2 finish coats

COMPLETE PLUMBING

BATH ACCESSORIES

WASHER PLUMBING & DRYER OUTLET

TAPING & TEXTURING CEILING

KITCHEN CUPBOARDS - Superior Millwork

FLOOR COVERINGS

WINDOWS - Triple Pane HS2A

MIRRORS

2 CENTRAL VAC OUTLET

2 TV OUTLETS

2 TELEPHONE OUTLETS

EAVESTROUGHING

**HOME OPTIONS INCLUDED IN PRICING**

TILE ABOVE KITCHEN COUNTERTOP

DINING BAY PROJECTION

WINDOW GRILLS ON FRONT

JETTED TUB IN ENSUITE

KITCHEN ISLAND

UTILITY ROOM CABINETS

WOOD RAILING AT STAIRWELL

VAULTED CEILING IN L.R, D, KI

ENLARGED LIVING ROOM WINDOW

COVERED VERANDA

REAR GARDEN DOOR

INSERT ON FRONT DOOR WITH MATCHING SIDELITE GLASS

STAIN GRADE DOOR ON WALK-IN PANTRY c/w motion light

TOTAL

\$ 235,348.34

\*GARAGE NOT INCLUDED\*

PRICES ARE SUBJECT TO CHANGE WITHOUT NOTICE, TAXES NOT INCLUDED