



The PALO 36'4" x 24'4" | 1317 sq.ft. | 3 Bedrooms + Den | 2 Bathrooms

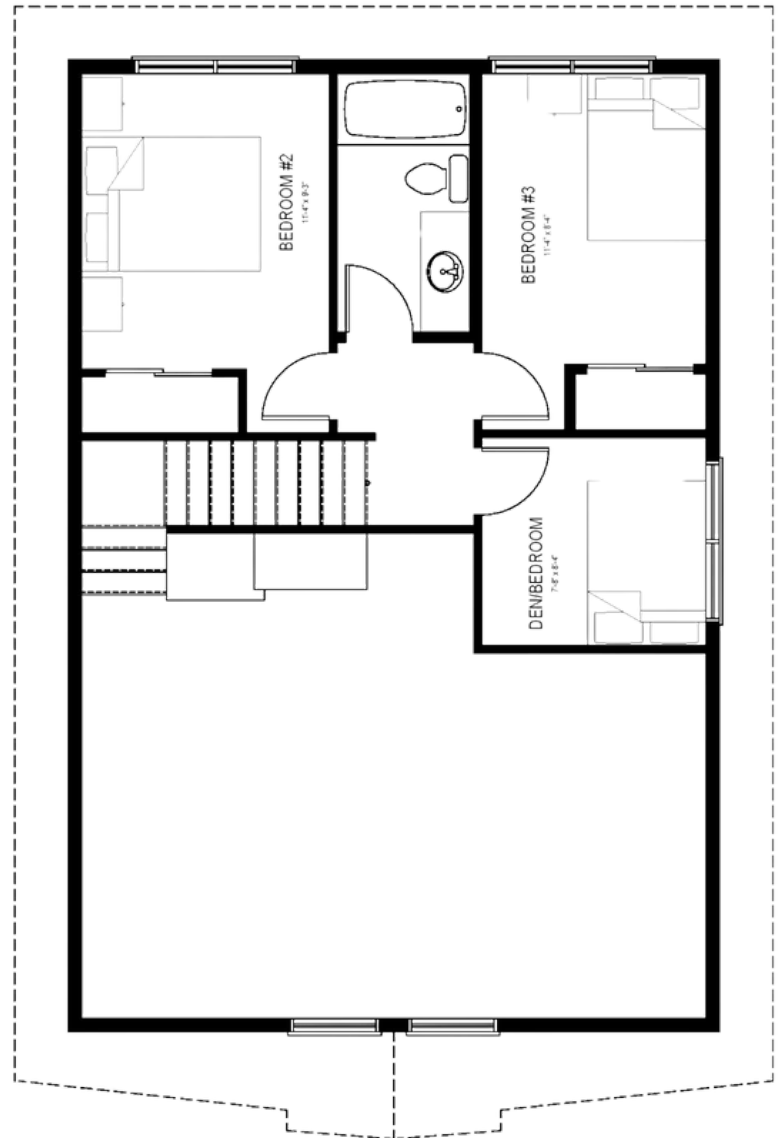
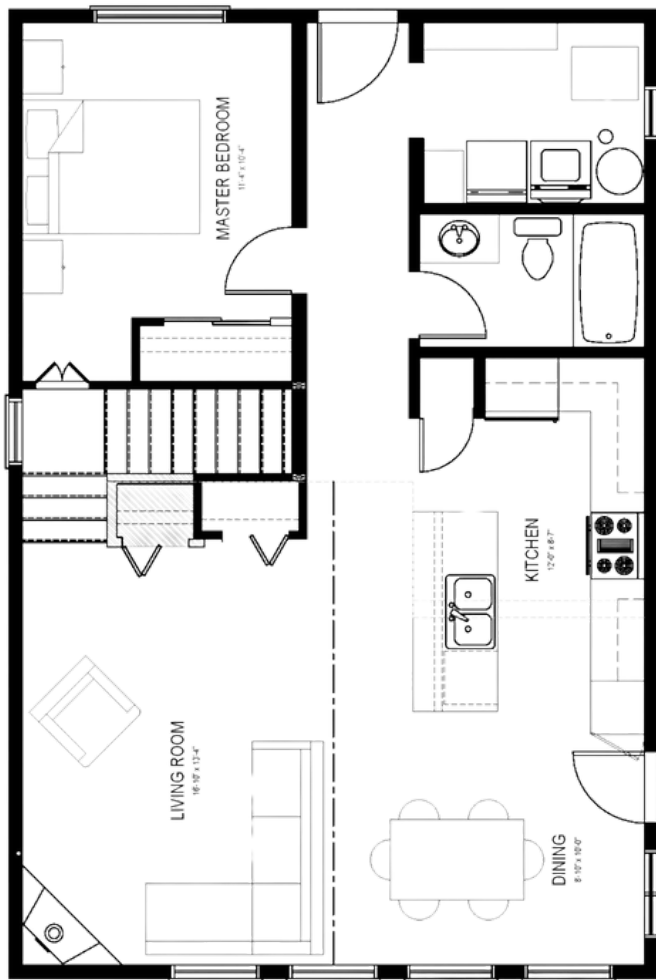
YOUR PLAN OR OURS

Not exactly what you're looking for?
All plans are fully customizable.



55 YEARS
ESTABLISHED 1969

**May be shown with optional features, including, but not limited to material and colours. Overall dimensions shown, excluding verandas.*



Your Family Legacy at the Lake

WELCOME to the Palo. If you've ever wished your family had a cottage where generations shared time and memories were passed down, maybe this is the year to start your family's legacy at the lake. This cottage is perfectly set up for the whole family, from the grandparents to the kids.

- A primary bedroom on the main floor offers privacy and accessibility for Grandma & Grandpa.
- The kids can stay up late telling ghost stories in the 2nd floor bedrooms, and even invite extra friends with the additional den space.
- Enjoy some family time in the wide open kitchen/dining/living area with floor to ceiling windows, an island with room for casual dining, and a cozy natural gas fireplace.



Western Canada's Most Trusted RTM Home Builder Since 1969