

MONTANA | 1547 sq.ft.

J&H HOMES



The MONTANA 52'x33' | 1547 sq.ft | 3 Bedrooms | 3 Bathrooms

YOUR PLAN OR OURS

Not exactly what you're looking for?
All plans are fully customizable.

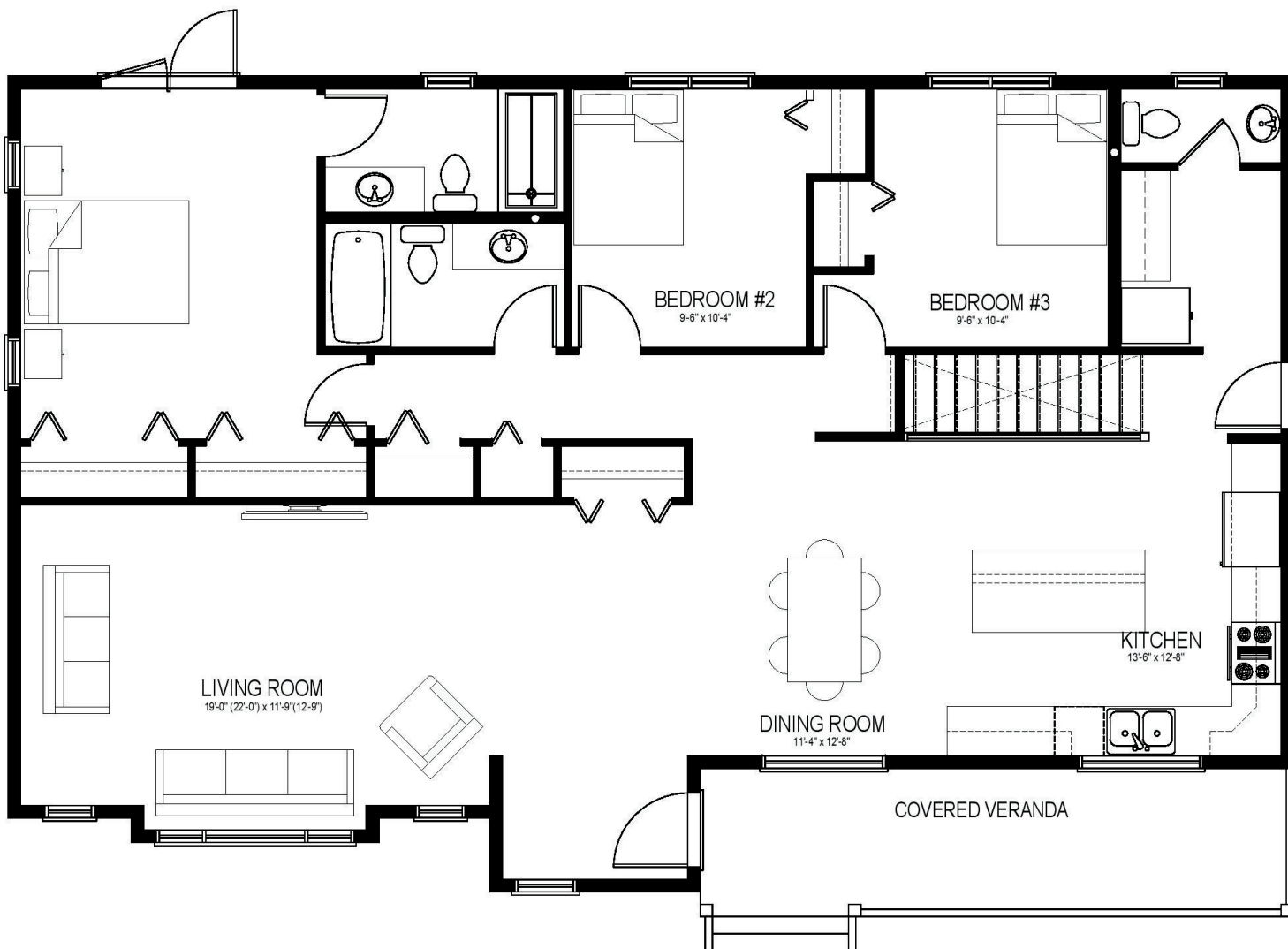
55 YEARS
ESTABLISHED 1969

**May be shown with optional features, including, but not limited to material and colours. Overall dimensions shown, excluding verandas.*

J&H HOMES

Western Canada's Most Trusted RTM Home Builder Since 1969

J&H Homes | 2505 Ave C North, Saskatoon, SK | S7L 6A6 | www.jhhomes.com | 306.652.5322 | info@jhhomes.com



The Traditional Ranch

WELCOME HOME to the Montana. This 1547 sq.ft. plan is open enough to visit with guests, but separates the business of the kitchen from the living area.

- Your primary suite will be your oasis, with double closets, private bathroom, and garden doors to your deck where you can enjoy a peaceful morning coffee.
- The covered veranda adds to the traditional feel of this Ranch-style home.
- Convenient easy-access mud room / laundry / powder room off your future garage or side entrance.



PROFESSIONAL MEMBER

Saskatoon & Region
Home Builders' Association



Western Canada's Most Trusted RTM Home Builder Since 1969

J&H Homes | 2505 Ave C North, Saskatoon, SK | S7L 6A6 | www.jhhomes.com | 306.652.5322 | info@jhhomes.com