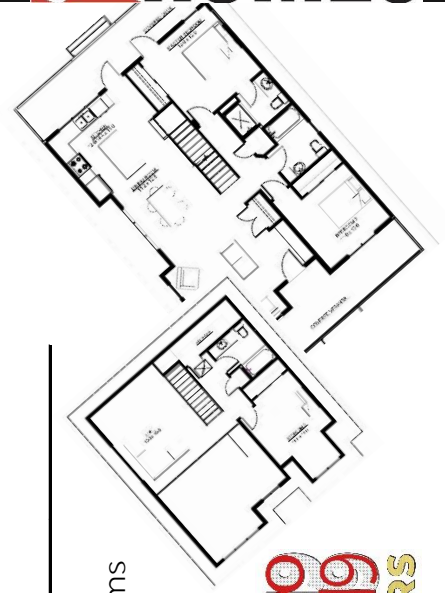


KINGSMERE | 1804 sq.ft.



The **KINGSMERE** 30'x40' | 1804 sq.ft. | 3 Bedrooms | 3 Bathrooms



YOUR PLAN OR OURS

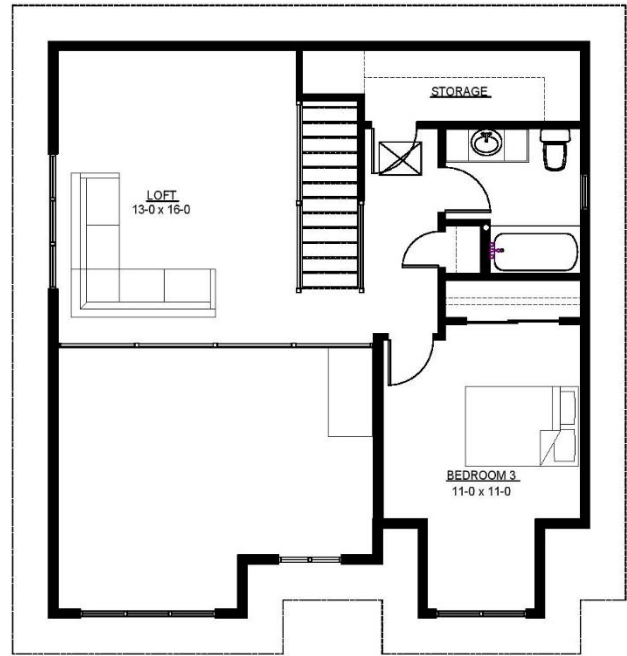
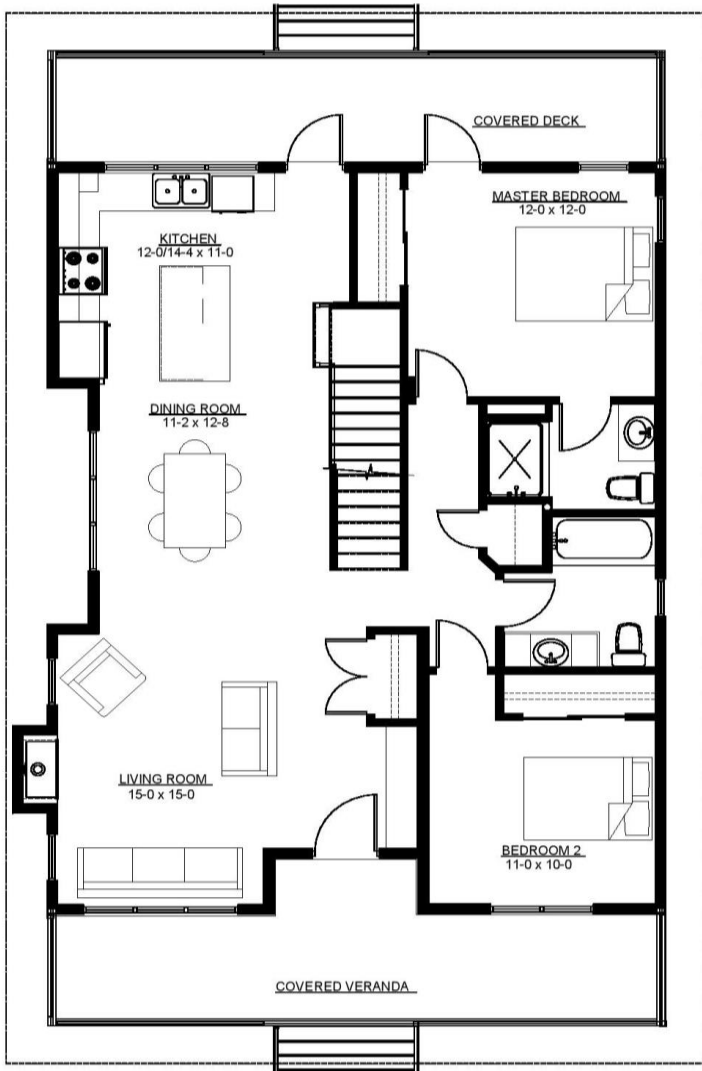
Not exactly what you're looking for?
All plans are fully customizable.

*May be shown with optional features, including, but not limited to material and colours. Overall dimensions shown, excluding verandas.



Western Canada's Most Trusted RTM Home Builder Since 1969

J&H Homes | 2505 Avenue C North, Saskatoon, SK | S7L 6A6 | www.jhhomes.com | 306.652.5322 | info@jhhomes.com



The KINGSMERE

The Craftsman Cottage

WELCOME to The Kingsmere. This 1804 sq.ft. cottage has room to gather with the entire family together, but also has lots of private spaces to sneak away for some quiet time.

- Covered verandas front and back allow you to chase the sun.
- A 2nd floor loft is the perfect getaway for reading or movies or for extra room when guests arrive.
- A large dining room means everyone eats together.
- Cuddle up to your natural gas fireplace on cooler evenings.



Western Canada's Most Trusted RTM Home Builder Since 1969

J&H Homes | 2505 Avenue C North, Saskatoon, SK | S7L 6A6 | www.jhhomes.com | 306.652.5322 | info@jhhomes.com