

KINGSMERE | 1804 sq.ft.

J&H HOMES



The KINGSMERE 30'x40' | 1804 sq.ft. | 3 Bedrooms | 3 Bathrooms

YOUR PLAN OR OURS

Not exactly what you're looking for?
All plans are fully customizable.

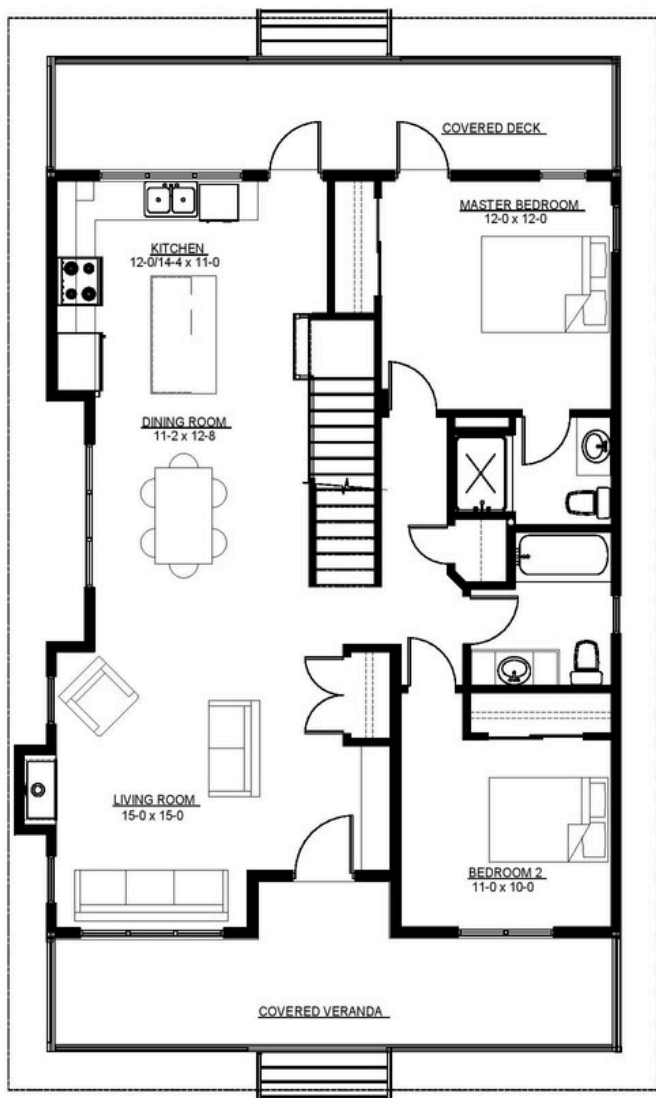
55 YEARS
ESTABLISHED 1969

**May be shown with optional features, including, but not limited to material and colours. Overall dimensions shown, excluding verandas.*



Western Canada's Most Trusted RTM Home Builder Since 1969

J&H Homes | 2505 Ave C North, Saskatoon, SK | S7L 6A6 | www.jhhomes.com | 306.652.5322 | info@jhhomes.com



The craftsman cottage

WELCOME to the Kingsmere. This 1804 sq.ft. cottage has room to gather with your entire family together, but also has lots of private spaces to sneak away for some quiet time.

- Covered verandas front and back allow you to chase the sun.
- A 2nd floor loft is the perfect getaway for reading or movies or extra room when guests arrive.
- A large dining room means everyone eats together.
- Cuddle up to your natural gas fireplace on cooler evenings.



Western Canada's Most Trusted RTM Home Builder Since 1969

J&H Homes | 2505 Ave C North, Saskatoon, SK | S7L 6A6 | www.jhhomes.com | 306.652.5322 | info@jhhomes.com