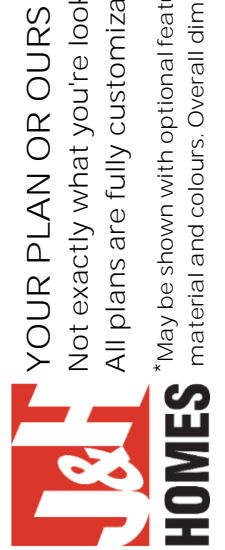


IMPERIAL II | 2044 sq.ft.



The **IMPERIAL II** | 38'x32' | 2044 sq.ft. | 3 Bedrooms | 3 Bathrooms

55
YEARS



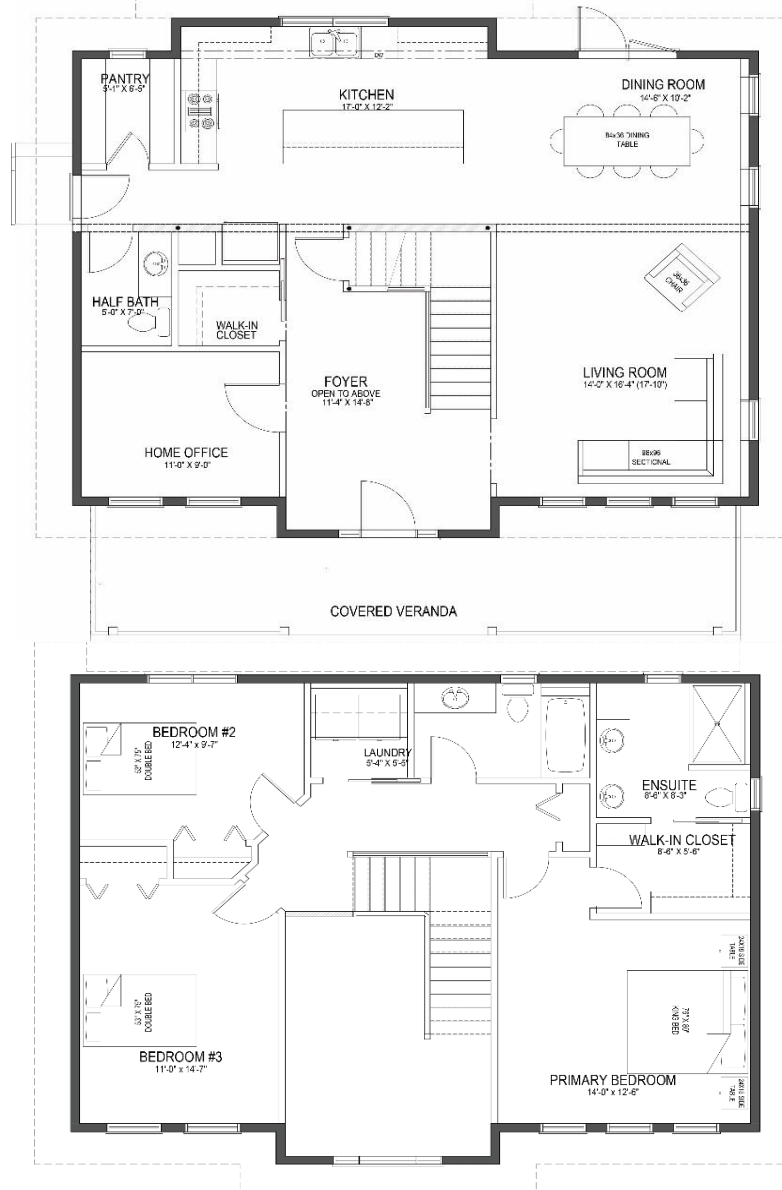
YOUR PLAN OR OURS

Not exactly what you're looking for?
All plans are fully customizable.

*May be shown with optional features, including, but not limited to material and colours. Overall dimensions shown, excluding verandas.

Western Canada's Most Trusted RTM Home Builder Since 1969

J&H Homes | 2505 Avenue C North, Saskatoon, SK | S7L 6A6 | www.jhhomes.com | 306.652.5322 | info@jhhomes.com



The IMPERIAL II

The Classic Farm House

WELCOME HOME to The Imperial II. This home is as stately outside as it is warm & inviting inside. Possibly the perfect family home... but we'll let you decide.

- Semi-open plan lets you entertain effortlessly, while allowing privacy when you need it.
- "Traditional" meets "New" with the character of an older home & storage & luxury of a new build.
- Features include: a walk-in pantry, home office, 2nd-floor laundry, and grand entrance.



Western Canada's Most Trusted RTM Home Builder Since 1969

J&H Homes | 2505 Avenue C North, Saskatoon, SK | S7L 6A6 | www.jhhomes.com | 306.652.5322 | info@jhhomes.com