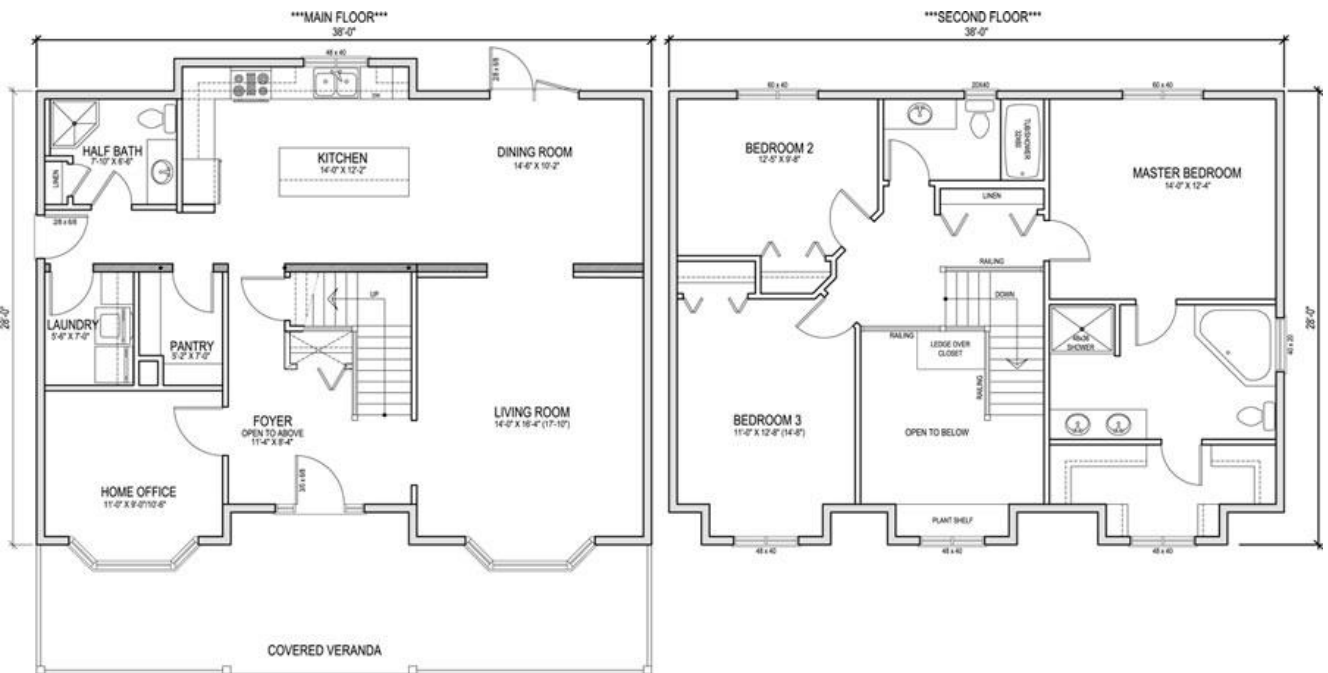




# The Imperial – 2034 Sq. Ft.



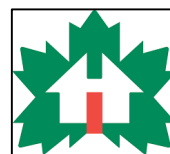
2505 Ave C N  
Saskatoon, Sask  
(306) 652-5322  
www.jhhomes.com

## HIGHLIGHTS

- Cape cod style
- Grand entry
- Large walk in pantry
- Laundry room
- Home office

**J&H Homes...Western Canada's Most Trusted RTM Home Builder Since 1969**

Actual plans may not be exactly as shown, and can be modified to suit your needs.



March 9, 2017

**IMPERIAL PLAN**

**2034 sq ft**

**J & H BUILDERS WAREHOUSE, SASKATOON, SK - STANDARD R.T.M. HOME SPECIFICATIONS**

FINISH MATERIAL

SHELVING & RODS

LIGHT FIXTURES INSTALLED - includes 6 pot lights in kitchen, 4 in living room

PAINTING - 1 Primer & 2 finish coats

COMPLETE PLUMBING

BATH ACCESSORIES

WASHER PLUMBING & DRYER OUTLET

TAPING & TEXTURING CEILING

KITCHEN CUPBOARDS - Superior Millwork

FLOOR COVERINGS

UPGRADE WINDOWS - Triple Pane HS2A

MIRRORS

4 CENTRAL VAC OUTLET

4 TV OUTLETS

4 TELEPHONE OUTLETS

EAVESTROUGHING

DUCTING TO 2ND STOREY

**HOME OPTIONS INCLUDED IN PRICING**

WALK - IN PANTRY c/w motion light

WINDOW & DOOR TRIM ON FRONT

ROCK ON BAY WINDOWS

TILE FOR BACKSPLASH

DUAL SIDELITES AT ENTRY C/W MATCHING INSERTS

DINING BAY WINDOW

UTILITY ROOM CABINETS

48" X 36" TILED WALL SHOWER IN ENSUITE

5' JETTED TUB IN ENSUITE

WOOD RAILING AT STAIRWELL W/METAL SPINDLES

COVERED VERANDA

LIVING ROOM BAY WINDOW

ISLAND c/w RAISED EATING BAR

TOTAL

\$ 272,628.85

\*GARAGE NOT INCLUDED\*

PRICES ARE SUBJECT TO CHANGE WITHOUT NOTICE, TAXES NOT INCLUDED