



The GREGOIRE 32'x 39' | 1211 sq.ft. | 3 Bedrooms | 2 Bathrooms

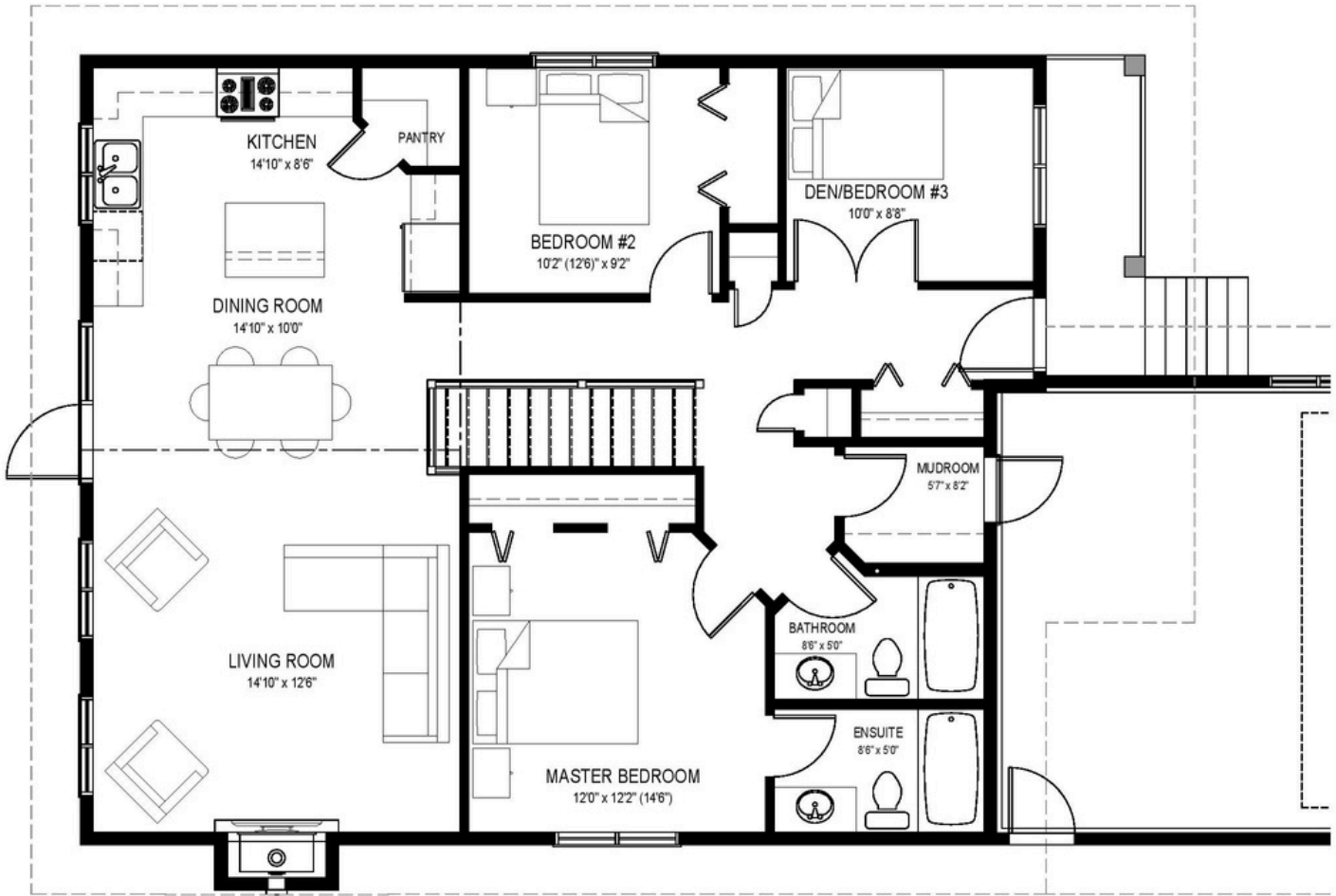
YOUR PLAN OR OURS

Not exactly what you're looking for?
All plans are fully customizable.



55 YEARS
ESTABLISHED 1969

**May be shown with optional features, including, but not limited to material and colours. Overall dimensions shown, excluding verandas.*



A Family Home in the City

WELCOME HOME to the Gregoire. This 1211 sq.ft. plan will be your family's oasis in the city.

- The covered veranda invites you to linger for morning coffee.
- Built for narrower lots, this 3 bedroom, 2 bathroom home feels spacious with its open site-lines and vaulted ceilings.
- Enjoy your private primary suite, with 3-piece bath and double-wide closet.
- The extra storage in the mud room will have you wondering how you ever managed without it.
- Winters seem shorter when you cozy up to the convenient natural gas fireplace.



PROFESSIONAL MEMBER

Saskatoon & Region Home Builders' Association



Western Canada's Most Trusted RTM Home Builder Since 1969