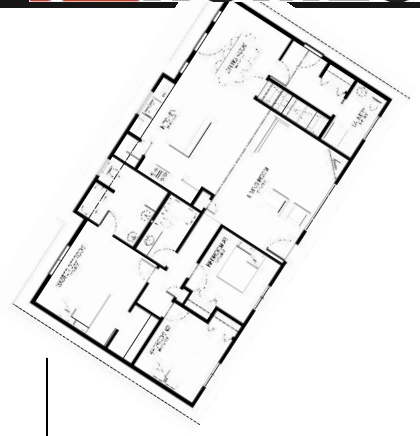


EASTEND | 1532 sq.ft.

**J&H HOMES**



The **EASTEND** | 53'x30' | 1532 sq.ft. | 3 Bedrooms | 3 Bathrooms  
 \$179,889\*

**YOUR PLAN OR OURS**

Not exactly what you're looking for?  
 All plans are fully customizable.

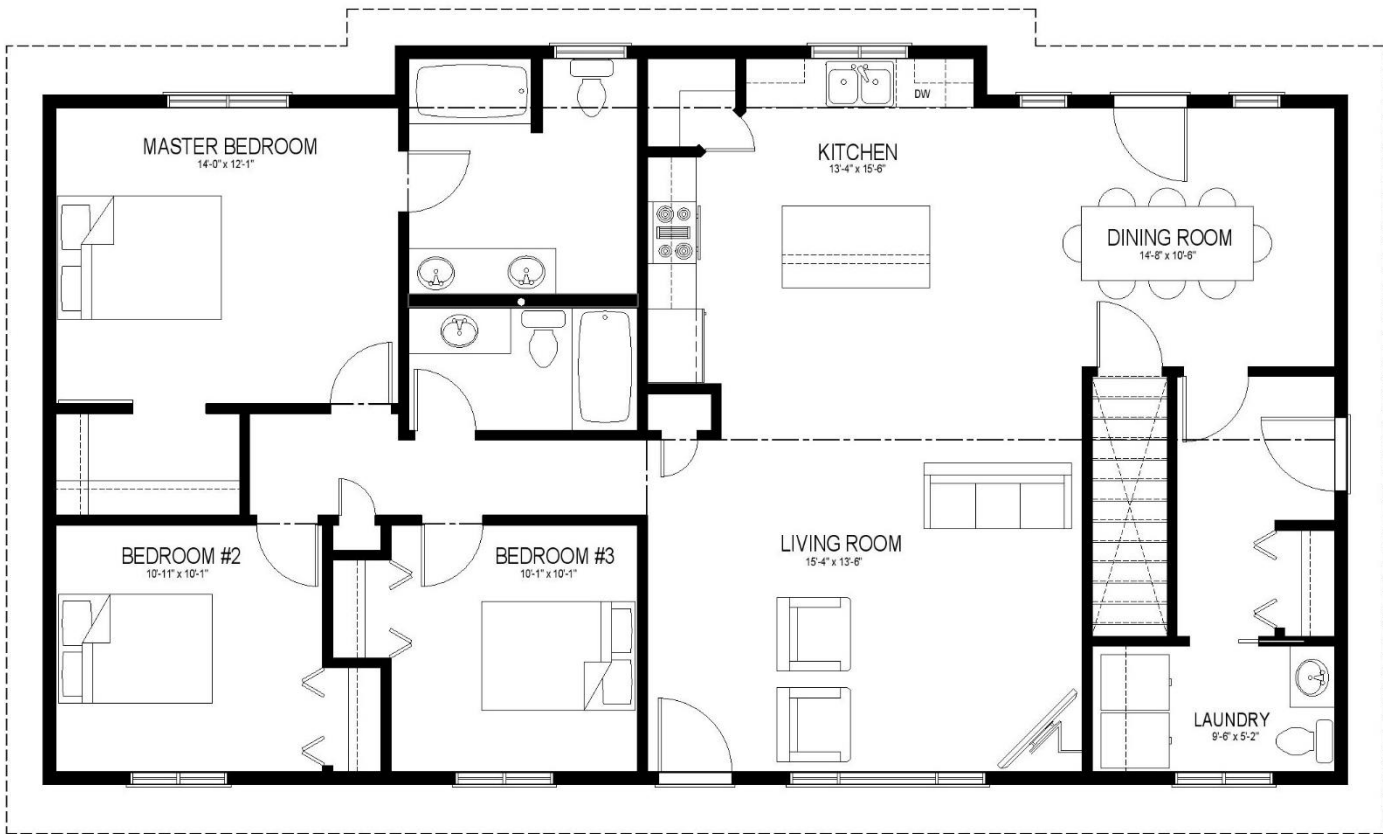
\*May be shown with optional features, including, but not limited to material and colours. Overall dimensions shown, excluding verandas.

**50<sup>th</sup>**  
**YEARS**

**J&H**  
**HOMES**

Western Canada's Most Trusted RTM Home Builder Since 1969

J&H Homes | 2505 Avenue C North, Saskatoon, SK | S7L 6A6 | [www.jhhomes.com](http://www.jhhomes.com) | 306.652.5322 | [info@jhhomes.com](mailto:info@jhhomes.com)



The EASTEND

*The Affordable Prairie Ranch*

WELCOME to The Eastend. If you love our open and spacious Shaunavon II plan, but don't need all the bells & whistles this may be the one. Still loads of room to breathe and space for everyone, but without the dormer windows and covered veranda, and at a lower price.

- Vaulted ceilings make the 1532 sq.ft. footprint even larger.
- The master suite is all about you... right down to the double vanity and walk-in closet.
- Easy-access mud room / laundry / bathroom off your future garage.
- Large open kitchen with pantry and island with space for casual dining.
- Your living space is further expanded with access to your backyard from your dining room.



Western Canada's Most Trusted RTM Home Builder Since 1969

J&H Homes | 2505 Avenue C North, Saskatoon, SK | S7L 6A6 | www.jhhomes.com | 306.652.5322 | info@jhhomes.com