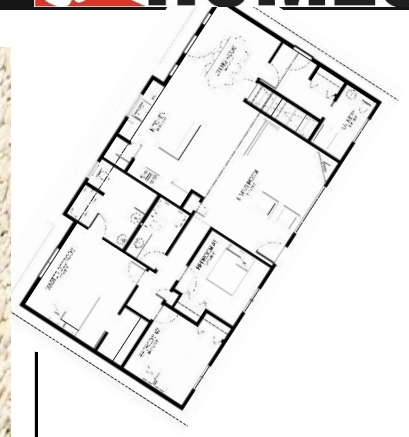


EASTEND | 1532 sq.ft.

**J&H HOMES**



The **EASTEND** | 53'x30' | 1532 sq.ft. | 3 Bedrooms | 3 Bathrooms

**YOUR PLAN OR OURS**

Not exactly what you're looking for?

All plans are fully customizable.

\*May be shown with optional features, including, but not limited to material and colours. Overall dimensions shown, excluding verandas.



**55**  
YEARS

Western Canada's Most Trusted RTM Home Builder Since 1969

J&H Homes | 2505 Avenue C North, Saskatoon, SK | S7L 6A6 | [www.jhhomes.com](http://www.jhhomes.com) | 306.652.5322 | [info@jhhomes.com](mailto:info@jhhomes.com)



## The EASTEND

## *The Affordable Prairie Ranch*

WELCOME to The Eastend. If you love our open and spacious Shaunavon plan, but don't need all the bells & whistles, this may be the one. You still get loads of room to breathe and space for everyone, but in a simpler plan, and at a lower price.

- Vaulted ceilings make the 1532 sq.ft. footprint even larger.
- The primary suite is all about you... right down to the double vanity and walk-in closet.
- Easy-access mud room / laundry / bathroom off your future garage.
- Large open kitchen with pantry and island with space for casual dining.
- Your living space expands into your backyard, with easy access from your dining room.



Western Canada's Most Trusted RTM Home Builder Since 1969

J&H Homes | 2505 Avenue C North, Saskatoon, SK | S7L 6A6 | [www.jhhomes.com](http://www.jhhomes.com) | 306.652.5322 | [info@jhhomes.com](mailto:info@jhhomes.com)