

CYPRESS | 1204 sq.ft.

J&H HOMES



The **CYPRESS** 42'X30' | 1204 sq.ft. | 3 Bedrooms | 2 Bathrooms

YOUR PLAN OR OURS

Not exactly what you're looking for?
All plans are fully customizable.

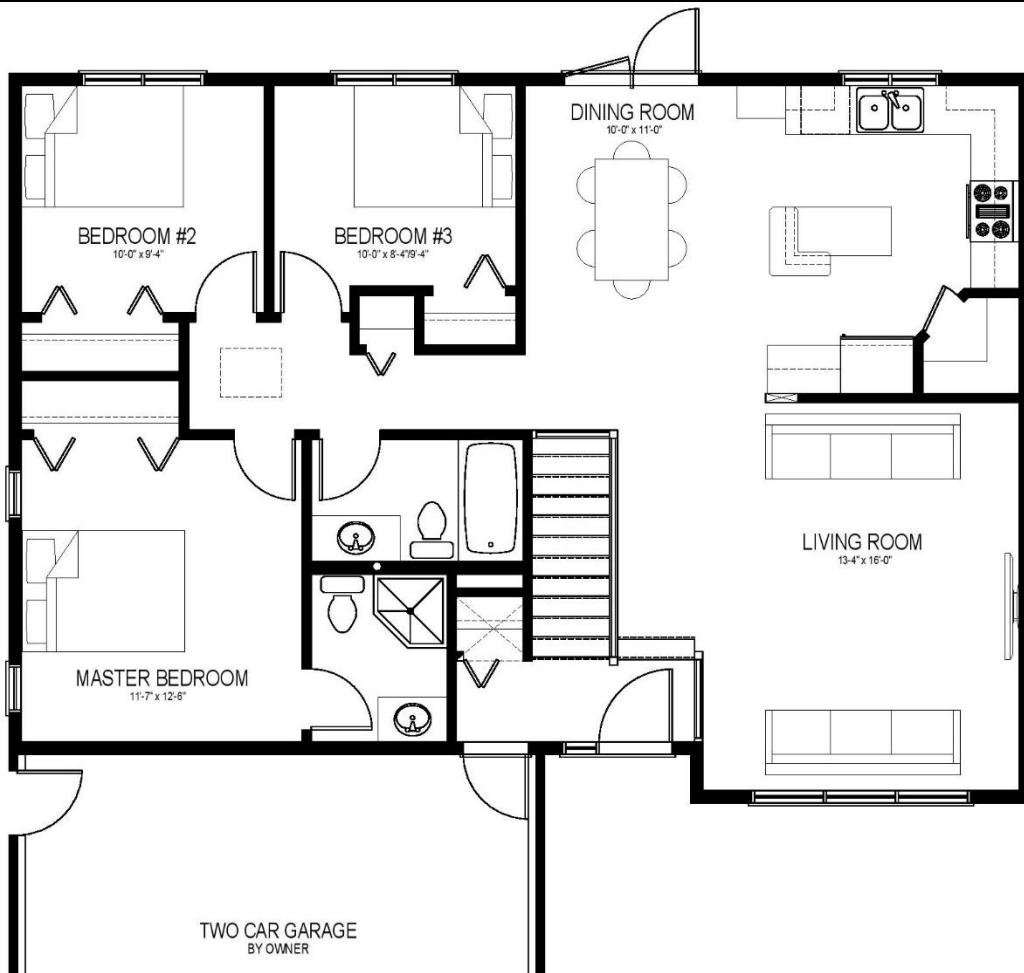
*May be shown with optional features, including, but not limited to material and colours. Overall dimensions shown, excluding verandas.

50th
YEARS

J&H
HOMES

Western Canada's Most Trusted RTM Home Builder Since 1969

J&H Homes | 2505 Avenue C North, Saskatoon, SK | S7L 6A6 | www.jhhomes.com | 306.652.5322 | info@jhhomes.com



The CYPRESS

The Country Classic

WELCOME HOME to The Cypress. This 1204 q.ft. plan is a tried-and-true classic. It has everything a family needs, with a large living room to gather, and a large kitchen with pantry storage and an island with room for cooking and eating.

- An ensuite in the primary bedroom gives you the privacy you deserve.
- Vaulted ceilings in the living room, dining room and kitchen make this home feel larger than 1204 sq.ft.
- Garden doors lead from the dining room to your future deck.



Western Canada's Most Trusted RTM Home Builder Since 1969

J&H Homes | 2505 Avenue C North, Saskatoon, SK | S7L 6A6 | www.jhhomes.com | 306.652.5322 | info@jhomes.com