

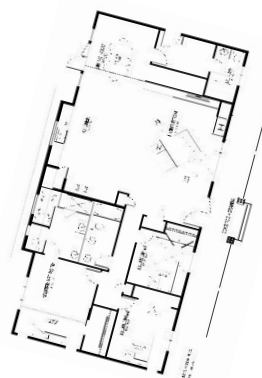
CUSTOM SHAUNAVON | 1880 sq.ft.

J&H HOMES



The **CUSTOM SHAUNAVON**

65'X34'X36' | 1880 sq.ft. | 3 Bedrooms | 3 Bathrooms



50th
YEARS

YOUR PLAN OR OURS

Not exactly what you're looking for?
All plans are fully customizable.

*May be shown with optional features, including, but not limited to material and colours. Overall dimensions shown, excluding verandas



Western Canada's Most Trusted RTM Home Builder Since 1969

J&H Homes | 2505 Avenue C North, Saskatoon, SK | S7L 6A6 | www.jhhomes.com | 306.652.5322 | info@jhhomes.com



The CUSTOM SHAUNAVON *A Custom Prairie Ranch House*

WELCOME HOME to The Custom Shaunavon. This 1880 sq.ft. plan will be your everyday getaway to the simple life.

- A 48' covered veranda invites you to linger for morning coffee.
- Vaulted dormers fill your living space with natural light
- Open to both living room and kitchen, the dining room allows access to the back yard through double garden doors.
- Rustic cedar beams and the custom tiled tub provide charm to the spacious primary suite, while the walk-in closet allows for superior storage and organization.
- Winters seem shorter when you cozy up to the convenient natural gas fireplace.
- You'll love the convenience of main-floor laundry, connected to the



Western Canada's Most Trusted RTM Home Builder Since 1969

J&H Homes | 2505 Avenue C North, Saskatoon, SK | S7L 6A6 | www.jhhomes.com | 306.652.5322 | info@jhhomes.com