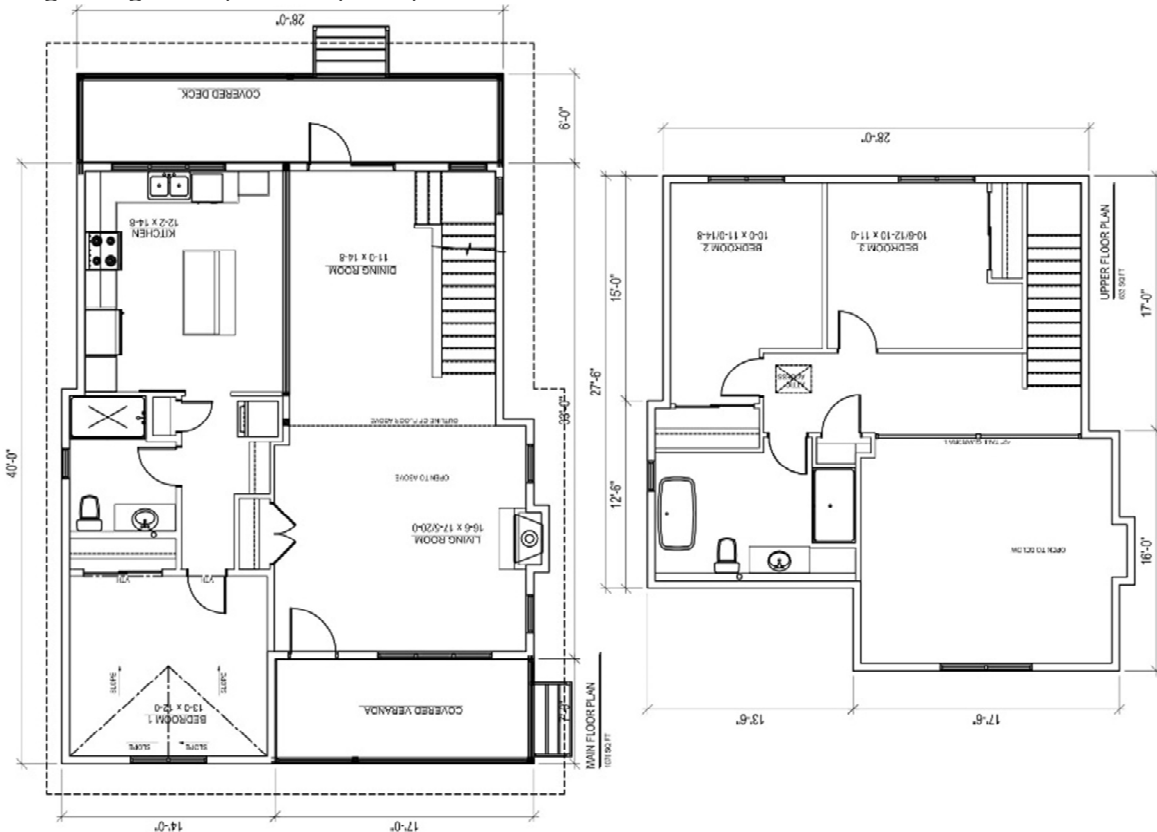




**3 Bedrooms | 2 Bathrooms | 1675 sq.ft.**  
 Large living room | Gas Fireplace | 2 Covered Verandas

**CREAN**  
 40'X28'X31'  
 1675 sq.ft.  
 \$252,702.96



Actual plans may not be exactly as shown, and can be modified to suit your needs

**Western Canada's Most Trusted RTM Home Builder Since 1969**

J&H Homes, 2505 Ave C North, Saskatoon, SK S7L 6A6; [www.jhhomes.com](http://www.jhhomes.com); Phone- 306-652-5322



14-Nov-18

**J&H BUILDER'S WAREHOUSE, SASKATOON, SK - STANDARD R.T.M. HOME SPECIFICATIONS**

BASIC PRICE - includes BSI floor joists 2nd floor and interior stairs  
FINISH MATERIAL  
SHELVING & RODS (MDF painted wall color)  
LIGHT FIXTURES INSTALLED - includes 10 LED pot lights & fan in open area  
PAINTING - 1 Primer & 2 finish coats  
COMPLETE PLUMBING  
BATH ACCESSORIES  
WASHER PLUMBING & DRYER OUTLET  
TAPING & TEXTURING CEILING  
KITCHEN CUPBOARDS - Superior Millwork  
FLOOR COVERINGS  
WINDOWS - Triple Pane HS2A  
MIRRORS  
4 CENTRAL VAC OUTLET  
4 TV OUTLETS  
4 TELEPHONE OUTLETS  
EAVESTROUGHING

**HOME OPTIONS INCLUDED IN PRICING**

NAT GAS FIREPLACE standard finish (includes wood mantel and tile surround)  
WINDOW & DOOR TRIM AND ARCHITECTURAL ACCESSORIES  
WINDOW GRILLS ON ALL WINDOWS  
9' WALLS ON MAIN FLOOR  
VAULTED CEILING BEDROOM #1  
1 - ARCHTOP WINDOWS ON FRONT  
1 - OVERSIZED WINDOW  
SINGLE GARDEN DOOR  
CHIMNEY CHASE AS PER PLAN  
TILE FOR BACKSPLASH  
  
CRAFTSMAN STYLE ENTRY DOOR C/W INSERT  
60" X 34" 1 PC SHOWER  
RAILING/GUARDRAIL AT STAIRWELL & OPEN AREA WOOD W/METAL SPINDLES  
COVERED VERANDA FRONT  
COVERED VERANDA REAR  
ISLAND IN KITCHEN 36" X 66"

**TOTAL**

**\$252,702.96**

\*GARAGE NOT INCLUDED\*

PRICES ARE SUBJECT TO CHANGE WITHOUT NOTICE, TAXES NOT INCLUDED.

