



**3 Bedrooms | 3 Bathrooms | 1380 sq.ft.**

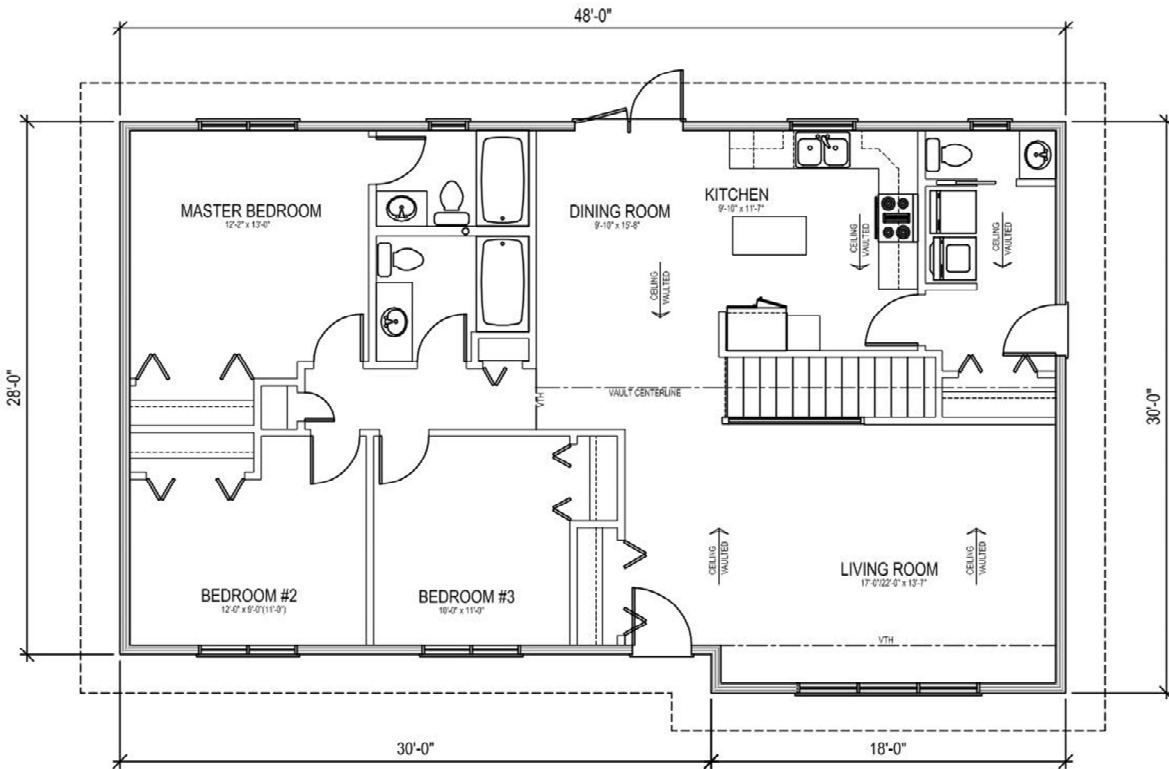
Large living room | Vaulted Ceilings | Main Floor Laundry

**BELLEVUE**

48'X28'X30'

1380 sq.ft.

\$160,288.44



Actual plans may not be exactly as shown, and can be modified to suit your needs

**Western Canada's Most Trusted RTM Home Builder Since 1969**

J&H Homes, 2505 Ave C North, Saskatoon, SK S7L 6A6; [www.jhhomes.com](http://www.jhhomes.com); Phone- 306-652-5322



**BELLEVUE PLAN | 48' X 28' X 30' | 1380 SQ.FT.**

14-Nov-18

**J&H BUILDER'S WAREHOUSE, SASKATOON, SK - STANDARD R.T.M. HOME SPECIFICATIONS**

BASIC PRICE  
FINISH MATERIAL  
SHELVING & RODS  
LIGHT FIXTURES INSTALLED - includes 4 pot lights in living room  
PAINTING - 1 Primer & 2 finish coats  
COMPLETE PLUMBING  
MIRRORS  
BATH ACCESSORIES  
WASHER PLUMBING & DRYER OUTLET  
TAPING & TEXTURING CEILING  
CABINETS & COUNTERTOPS - Superior Millwork  
FLOOR COVERINGS  
UPGRADE WINDOWS - Triple Pane HS2A  
2 TV OUTLETS  
2 TELEPHONE OUTLETS  
1 CENTRAL VAC OUTLET  
EAVESTROUGHING

**HOME OPTIONS INCLUDED IN PRICING**

TILE ABOVE KITCHEN COUNTERTOP  
LAUNDRY CABINETS  
GARDEN DOORS OFF DINING  
VAULTED CEILINGS LR, DN & KT  
WOOD RAILING

TOTAL                      \$160,288.44

\*GARAGE NOT INCLUDED\*  
PRICES ARE SUBJECT TO CHANGE WITHOUT NOTICE, TAXES NOT INCLUDED.

