



The BATTLEFORD 47'6" x 28' | 1242 sq.ft. | 3 Bedrooms | 2 Bathrooms

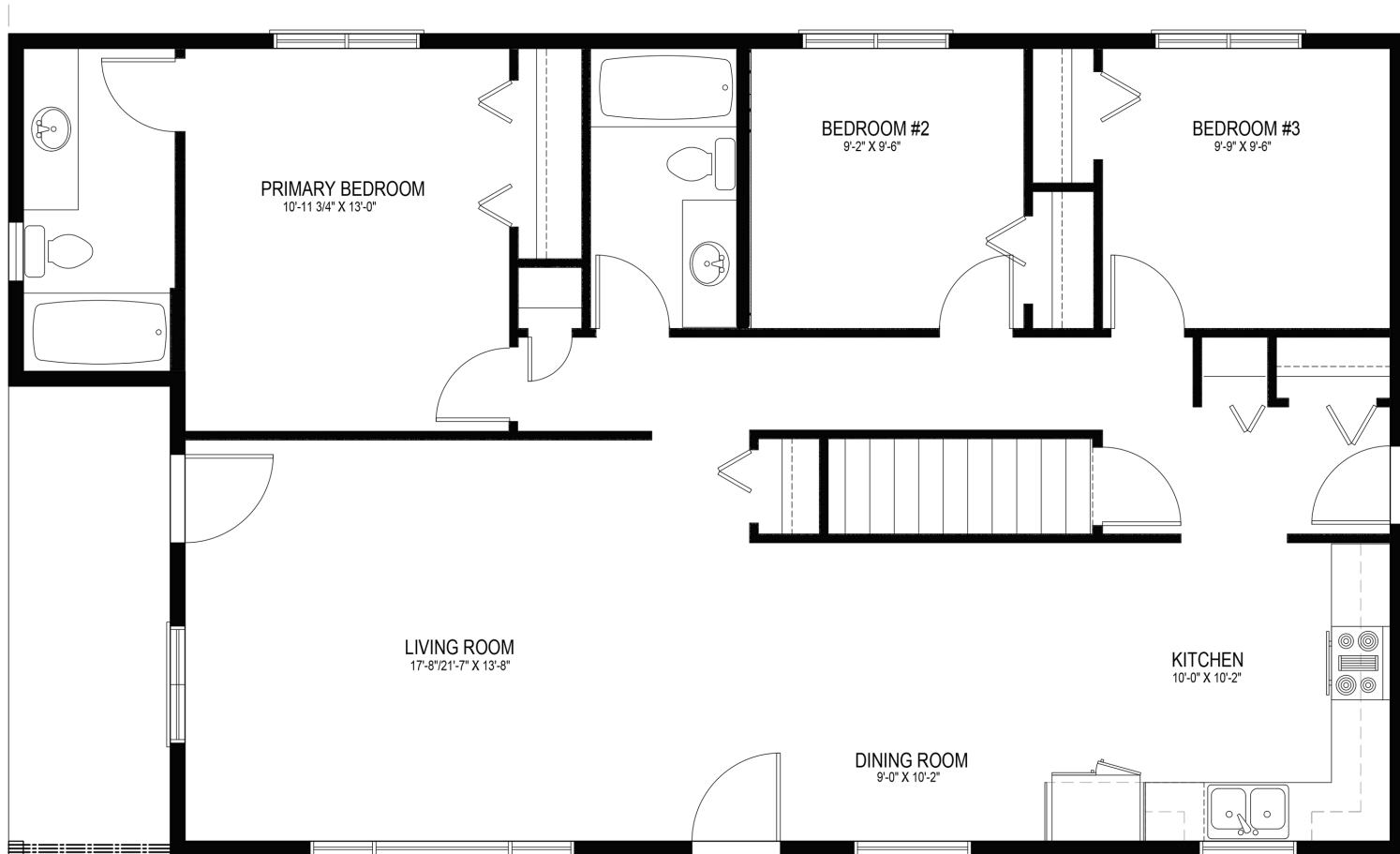
YOUR PLAN OR OURS

Not exactly what you're looking for?
All plans are fully customizable.

55 YEARS
ESTABLISHED 1969

**May be shown with optional features, including, but not limited to material and colours. Overall dimensions shown, excluding verandas.*





April 10, 2025

The Bungalow with Flow

WELCOME HOME to the Battleford. Good things come in little packages. Just look at this new-and-improved 1242 sq.ft. bungalow plan. The flow of this home allows multiple access points to each room. Extra space was delegated to the living room so there's room for everyone to sit and watch that favourite family movie.

- Multiple closets throughout means everything has a place. No clutter in *this* home!
- This new-and-improved plan now includes an ensuite in the primary bedroom and a side veranda!



PROFESSIONAL MEMBER

Saskatoon & Region Home Builders' Association



Western Canada's Most Trusted RTM Home Builder Since 1969