

BATTLEFORD | 1198 sq.ft.

J&H HOMES



The **BATTLEFORD** | 47'6"X28' | 1198 sq.ft. | 3 Bedrooms | 2 Bathrooms

YOUR PLAN OR OURS

Not exactly what you're looking for?
All plans are fully customizable.

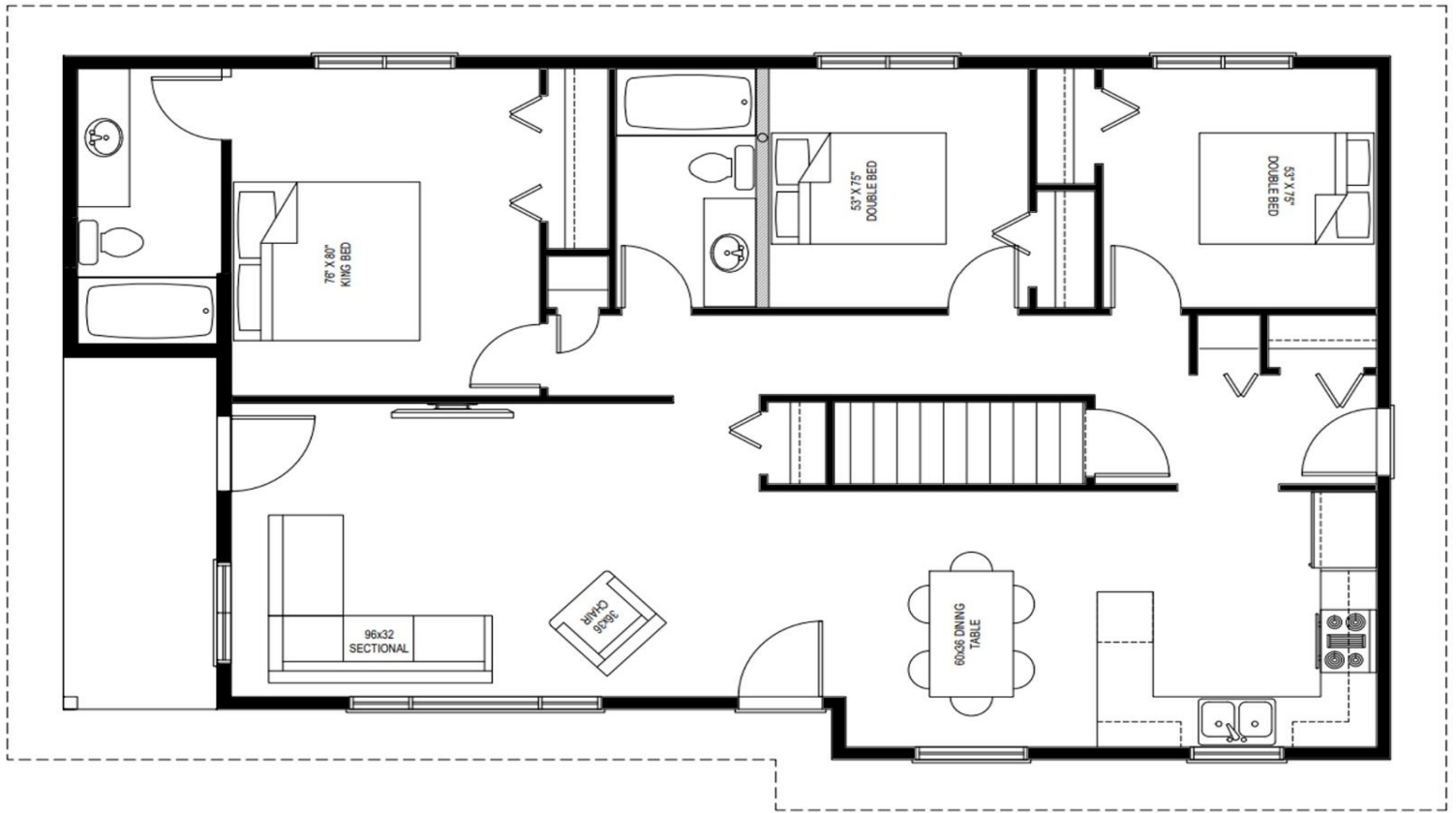
*May be shown with optional features, including, but not limited to material and colours. Overall dimensions shown, excluding verandas.

50th
YEARS

J&H
HOMES

Western Canada's Most Trusted RTM Home Builder Since 1969

J&H Homes | 2505 Avenue C North, Saskatoon, SK | S7L 6A6 | www.jhhomes.com | 306.652.5322 | info@jhhomes.com



The BATTLEFORD

The Bungalow with Flow

WELCOME HOME to The Battleford. Good things come in little packages. Just look at this 1198 sq.ft. bungalow plan. The flow of this home allows multiple access points to each room. Extra room was delegated to the living room so there's space for everyone to sit and watch that favourite family movie.

- Multiple closets throughout means everything has a place. No clutter in *this* home!
- This new-and -improved plan now includes an ensuite in the master bedroom and a side veranda!



Western Canada's Most Trusted RTM Home Builder Since 1969

J&H Homes | 2505 Avenue C North, Saskatoon, SK | S7L 6A6 | www.jhhomes.com | 306.652.5322 | info@jhhomes.com