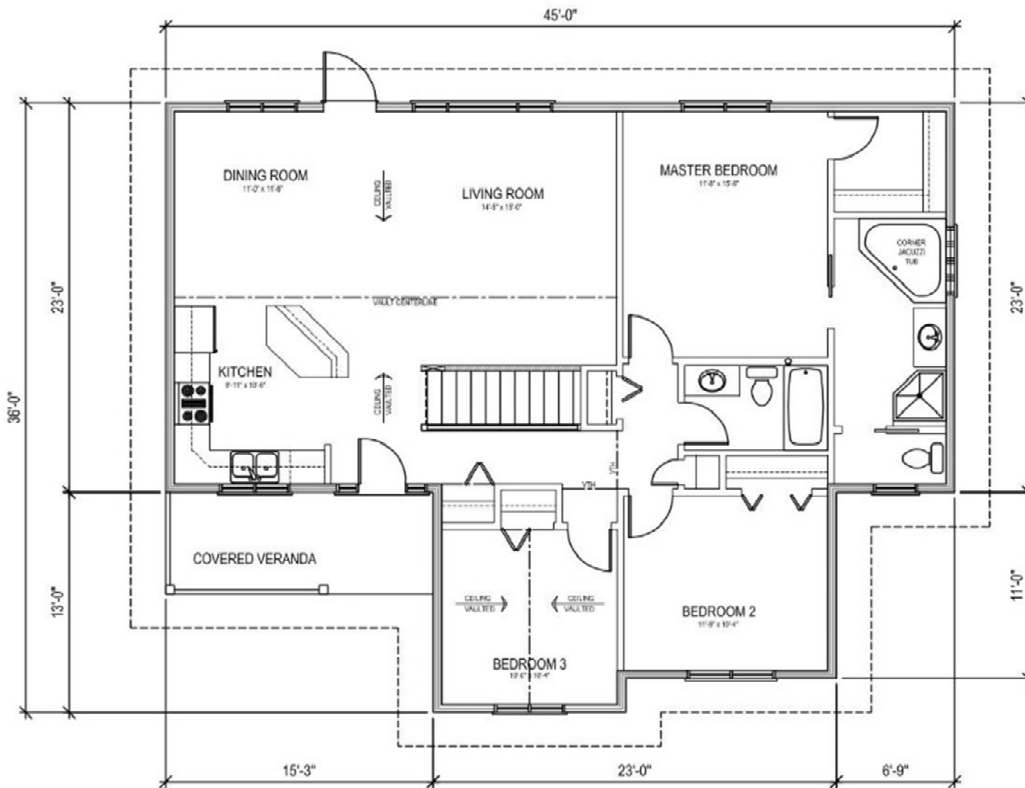




**3 Bedrooms | 2 Bathrooms | 1310 sq.ft.**  
 Large living room | Vaulted Ceilings | Walk-In Closet

**ASPEN I**  
 45'X36'X23'  
 1310 sq.ft.  
 \$179,309.94



Actual plans may not be exactly as shown, and can be modified to suit your needs

**Western Canada's Most Trusted RTM Home Builder Since 1969**

J&H Homes, 2505 Ave C North, Saskatoon, SK S7L 6A6; [www.jhhomes.com](http://www.jhhomes.com); Phone- 306-652-5322



14-Nov-18

**J&H BUILDER'S WAREHOUSE, SASKATOON, SK - STANDARD R.T.M. HOME SPECIFICATIONS**

BASIC PRICE - includes roof pitch increase and double gable on front  
FINISH MATERIAL INSTALLED  
SHELVING & RODS INSTALLED  
LIGHT FIXTURES INSTALLED- included 4 pot lights in living room  
PAINTING –1 primer and 2 finish coats  
COMPLETE PLUMBING  
MIRRORS  
BATH ACCESSORIES  
TAPING & TEXTURING CEILING  
KITCHEN CUPBOARDS INSTALLED – Superior Millwork  
FLOOR COVERINGS  
CASEMENT WINDOWS – Triple Pane HS2A  
2 TV OUTLETS  
2 TELEPHONE OUTLETS  
2 CENTRAL VAC OUTLETS  
EAVESTROUGHING

**HOME OPTIONS INCLUDED IN PRICING**

TILE ABOVE KITCHEN COUNTERTOP  
CORNER PANTRY IN KITCHEN c/w motion light  
WOOD RAILING AT STAIRWELL  
VAULTED CEILING IN LR, DI, KI, & B#2  
KITCHEN ISLAND  
WINDOW GRILLS ON FRONT ONLY  
INSERT ON FRONT DOOR WITH MATCHING SIDELITE  
5' CORNER JET TUB IN ENSUITE  
GLASS BLOCK WINDOW IN ENSUITE  
COVERED VERANDA  
HALF ROUND WINDOW IN B#2  
  
SINGLE GARDEN DOOR  
STONE ON FRONT OF B#2

TOTAL

\$179,309.94

\*GARAGE NOT INCLUDED\*

PRICES ARE SUBJECT TO CHANGE WITHOUT NOTICE, TAXES NOT INCLUDED.

