

ASPEN | 1478 sq.ft.



The **ASPEN** 47' X 36' | 1478 sq.ft. | 3 Bedrooms | 2 Bathrooms

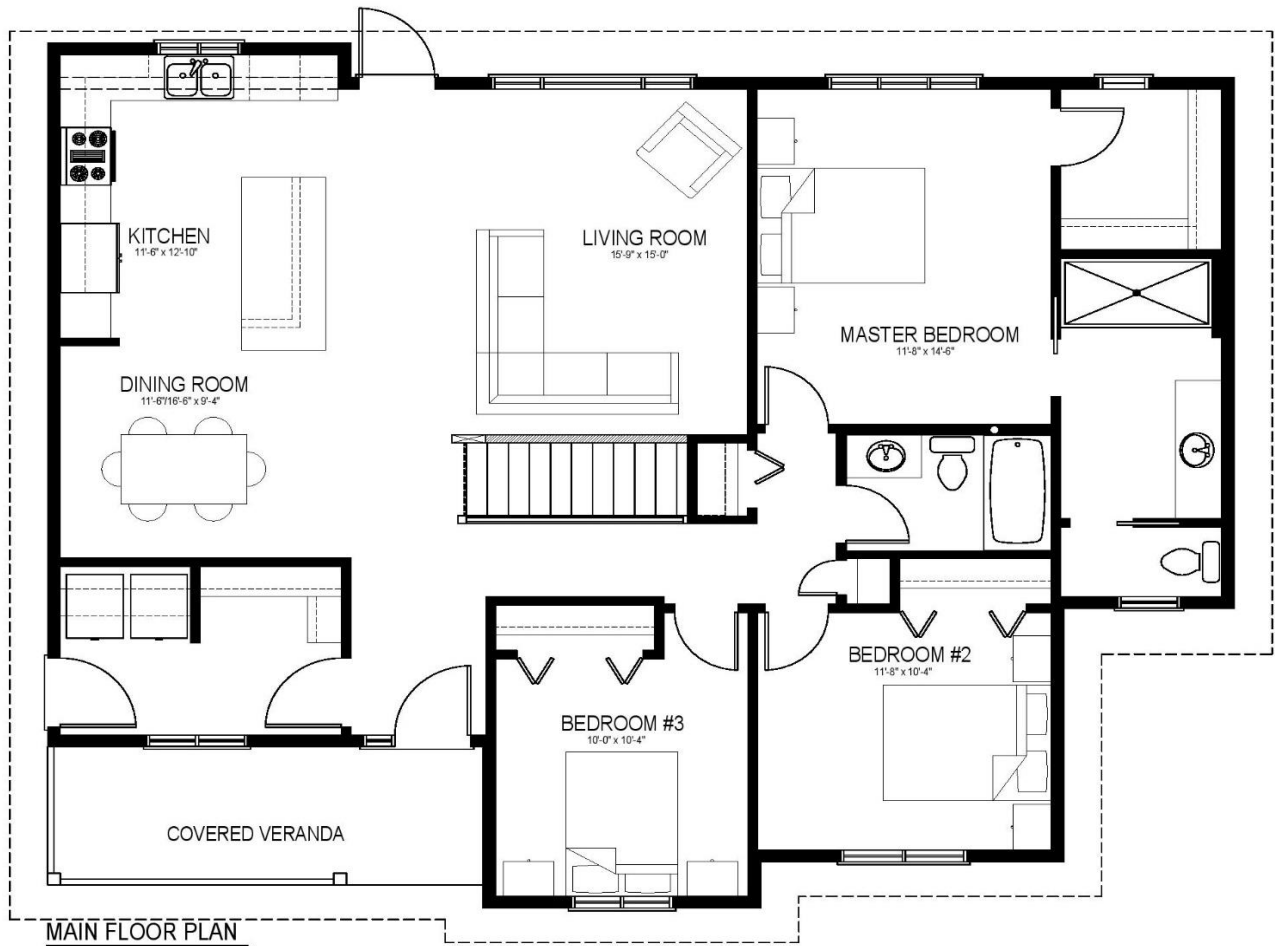


YOUR PLAN OR OURS

Not exactly what you're looking for?
All plans are fully customizable.

*May be shown with optional features, including, but not limited to material and colours. Overall dimensions shown, excluding verandas.





The ASPEN

The Entertainers' Craftsman 2.0

WELCOME HOME to The Aspen. This 1478sq.ft. home lets you entertain into the night while the kids sleep soundly, with a separate "bedroom wing". Upgraded for modern family life, this plan adds direct access to your future garage through a smart mudroom/ laundry room.

- The party starts at the front door with an attractive covered veranda, entering into the large Great Room.
- Vaulted ceilings show off your new space, as you host those large family gatherings in your large living area.
- When the party is over, relax in your huge Master Retreat, complete with a large walk-in closet and ensuite.



Western Canada's Most Trusted RTM Home Builder Since 1969

J&H Homes | 2505 Avenue C North, Saskatoon, SK | S7L 6A6 | www.jhhomes.com | 306.652.5322 | info@jhhomes.com