



The **ALBIAN II** 26'x 48' | 1248 sq.ft. | 3 Bedrooms | 2 Bathrooms

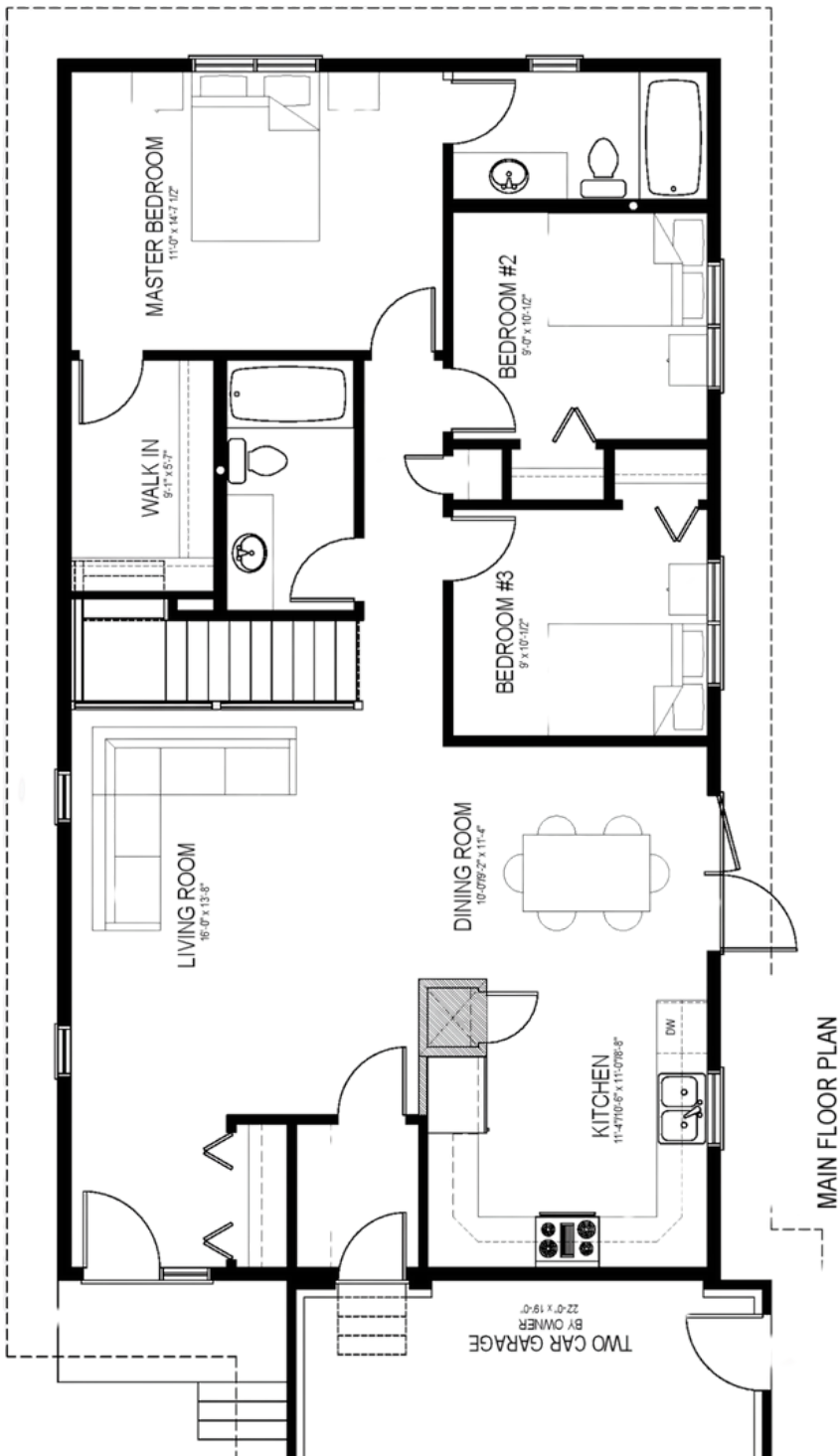
YOUR PLAN OR OURS

Not exactly what you're looking for?
All plans are fully customizable.



55 YEARS
ESTABLISHED 1969

**May be shown with optional features, including, but not limited to material and colours. Overall dimensions shown, excluding verandas.*



A charming home in the

WELCOME HOME to the Albian II. Like the Albian I, this 1248 sq.ft. plan still fits on a smaller footprint, but this alternate plan gives convenient direct access to your attached garage and an additional mud room.

- Couples with an eye for fashion will love the huge walk-in closet in the primary suite.
- Vaulted ceilings make the living and dining rooms larger and brighter.
- A covered veranda welcomes guests to your new home.
- Your family will love the added convenience of direct-access to the garage, plus a mud room to hide all those jackets, toques, and mittens, and skis, and... well. you get the idea!



PROFESSIONAL MEMBER



Western Canada's Most Trusted RTM Home Builder Since 1969

J&H Homes | 2505 Ave C North, Saskatoon, SK | S7L 6A6 | www.jhhomes.com | 306.652.5322 | info@jhhomes.com