

ALBIAN I | 1164 sq.ft.



The **ALBIAN I** 26'X48' (incl. 14'x6' covered veranda) | 1164 sq.ft. | 3 Bedrooms | 2 Bathrooms



YOUR PLAN OR OURS

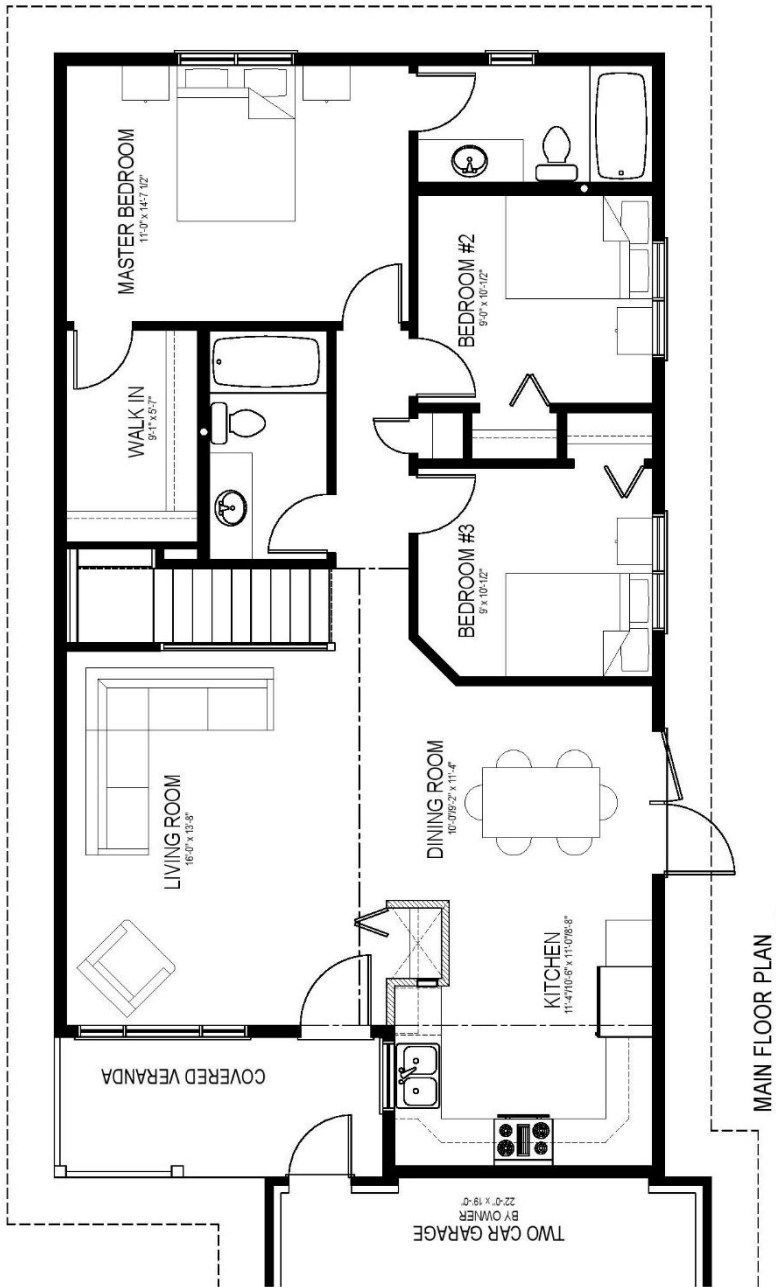
Not exactly what you're looking for?
All plans are fully customizable.

*May be shown with optional features, including, but not limited to material and colours. Overall dimensions shown, including veranda.



Western Canada's Most Trusted RTM Home Builder Since 1969

J&H Homes | 2505 Avenue C North, Saskatoon, SK | S7L 6A6 | www.jhhomes.com | 306.652.5322 | info@jhhomes.com



The ALBIAN I

A charming home in the city

WELCOME HOME to The Albian I. This 1164sq.ft. plan fits on a smaller footprint, perfect for city lots, but its semi-open plan feels spacious. while feeling spacious.

- Couples with an eye for fashion will love the huge walk-in closet in the Master Suite.
- Vaulted ceilings make the living and dining rooms larger and brighter.
- A covered veranda welcomes guests to your new home.



Western Canada's Most Trusted RTM Home Builder Since 1969

J&H Homes | 2505 Avenue C North, Saskatoon, SK | S7L 6A6 | www.jhhomes.com | 306.652.5322 | info@jhhomes.com

ALBIAN II | 1248 sq.ft.



The **ALBIAN II** 26'X48' | 1248 sq.ft. | 3 Bedrooms | 2 Bathrooms



YOUR PLAN OR OURS

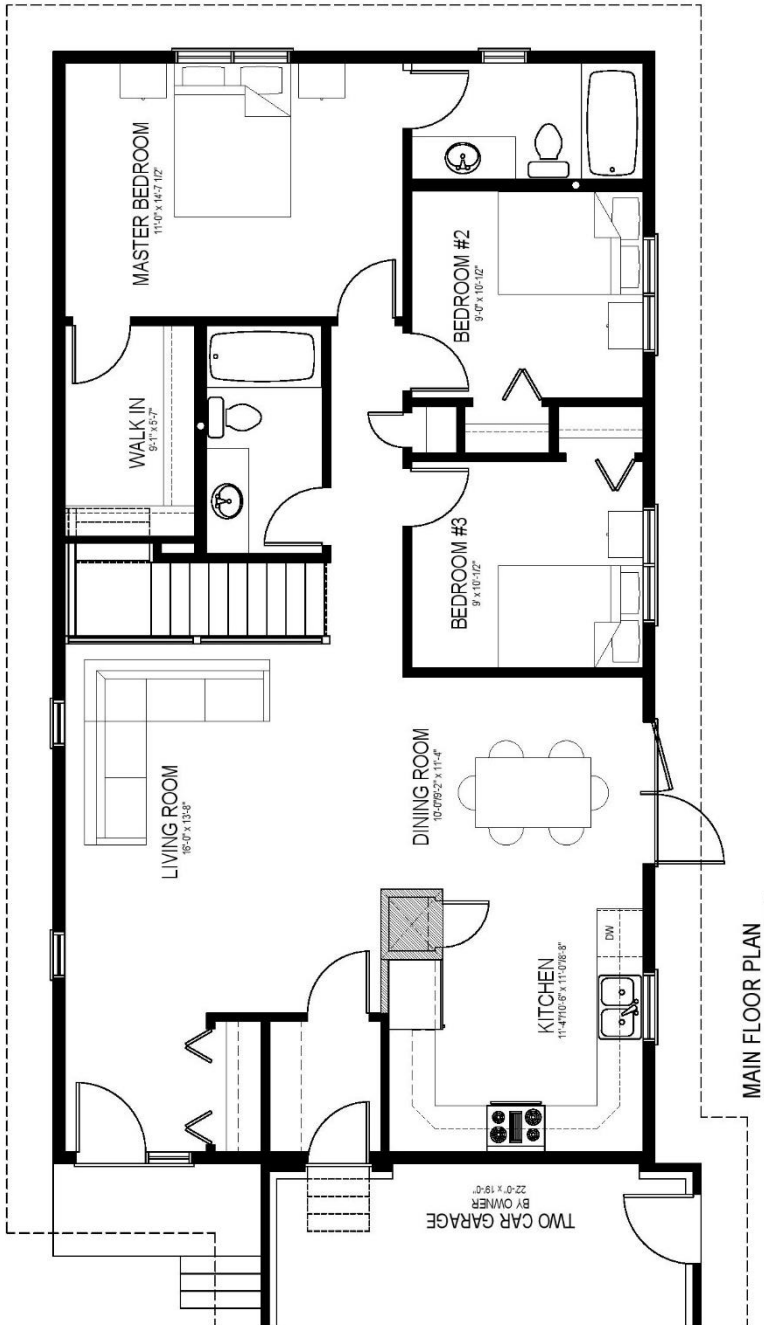
Not exactly what you're looking for?
All plans are fully customizable.

*May be shown with optional features, including, but not limited to material and colours. Overall dimensions shown, excluding verandas.



Western Canada's Most Trusted RTM Home Builder Since 1969

J&H Homes | 2505 Avenue C North, Saskatoon, SK | S7L 6A6 | www.jhhomes.com | 306.652.5322 | info@jhhomes.com



The ALBIAN II
A charming home in the city

WELCOME HOME to The Albian II. Like the Albian I, this 1248sq.ft. plan still fits on a smaller footprint, but this alternate plan gives convenient direct access to your attached garage and an additional mud room.

- Couples with an eye for fashion will love the huge walk-in closet in the Master Suite.
- Vaulted ceilings make the living and dining rooms larger and brighter.
- A covered veranda welcomes guests to your new home.
- Your family will love the added convenience of direct-access to the garage plus a mud room to hide all those jackets, and toques, and mittens, and skis, and... well, you get the idea!



Western Canada's Most Trusted RTM Home Builder Since 1969

J&H Homes | 2505 Avenue C North, Saskatoon, SK | S7L 6A6 | www.jhhomes.com | 306.652.5322 | info@jhhomes.com