

3 Bedrooms | 3 Bathrooms | 1935 sq.ft.

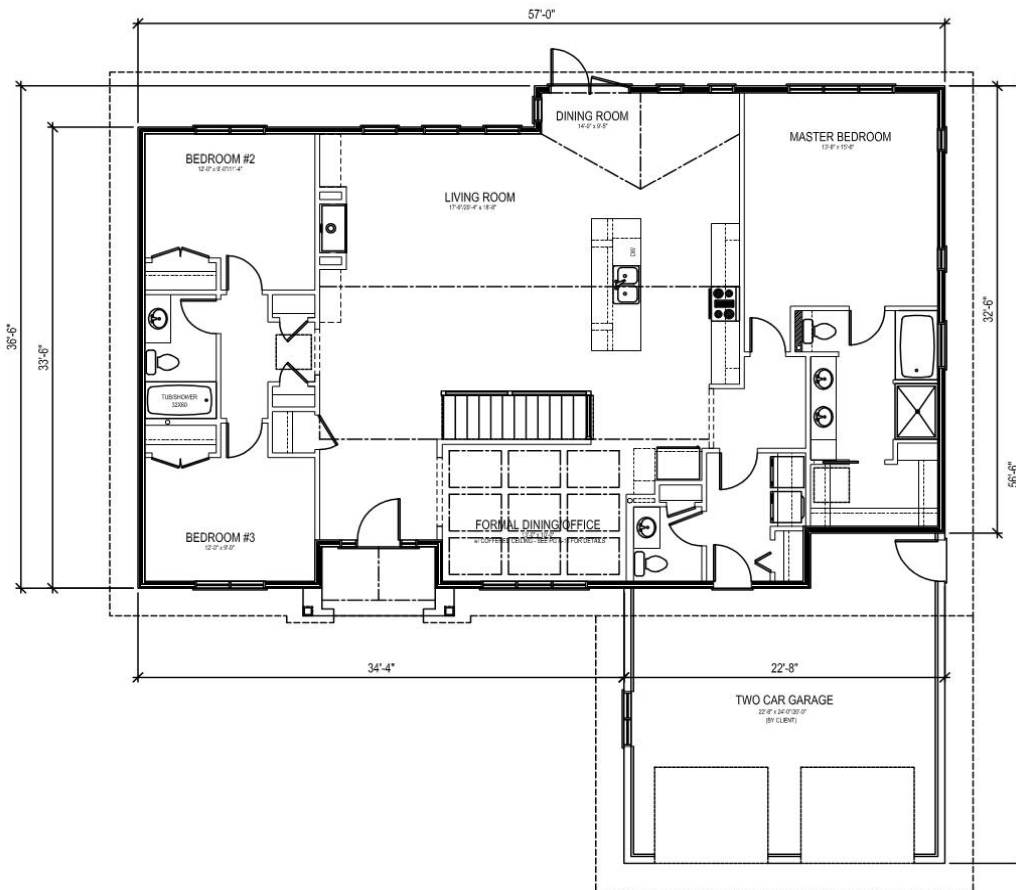
Large living room | Vaulted Ceilings | Formal Dining Area | Gas Fireplace

ALAMEDA

32'6"X33'6"X57

1935 sq.ft.

\$289,944.45



Actual plans may not be exactly as shown, and can be modified to suit your needs

Western Canada's Most Trusted RTM Home Builder Since 1969

J&H Homes, 2505 Ave C North, Saskatoon, SK S7L 6A6; www.jhhomes.com; Phone- 306-652-5322



14-Nov-18

J&H BUILDER'S WAREHOUSE, SASKATOON, SK - STANDARD R.T.M. HOME SPECIFICATIONS

BASIC PRICE

FINISH MATERIAL - delete bi-folds, includes pocket door

SHELVING & RODS - MDF painted

LIGHT FIXTURES INSTALLED - includes 32 LED pot lights

PAINTING - 1 Primer and 2 Finish Coats

COMPLETE PLUMBING - includes second sink in ensuite

MIRRORS

BATH ACCESSORIES

WASHER PLUMBING & DRYER OUTLET

TAPING & TEXTURING CEILING

CABINETS & COUNTERTOPS – Superior Millwork c/w Quartz Countertops in Kitchen

FLOOR COVERINGS

WINDOWS – Triple Pane HS2A

2 TV OUTLETS

2 TELEPHONE OUTLETS

2 CENTRAL VAC OUTLETS

EAVESTROUGHING

HOME OPTIONS INCLUDED IN PRICING

TILE ABOVE KITCHEN COUNTERTOP AND WALL TILE

48" X 36" TILED WALL SHOWER IN ENSUITE

COTTAGE ROOF AND VAULTING IN LR, DR & KITCHEN

EXTERIOR TRIM & SHAKES

FRONT COVERED ENTRANCE c/w stone posts & fiberon decking

JAMES HARDIE CONCRETE BOARD SIDING

KITCHEN ISLAND

9' CEILING THROUGH OUT

INSERT ON FRONT DOOR WITH DUAL SIDELITES

WINDOW GRILLS

DOUBLE GARDEN DOOR

COFFERED CEILING IN OFFICE/DINING c/w Arches

WOOD RAILING

ROCK ON FRONT AS PER PLAN

NG FIREPLACE (modern style)

FIREPLACE CABINETS

OPTIONAL: STAINLESS STEEL RANGE HOOD & UNDERCABINET LIGHTING

TOTAL

\$289,944.45

****MOVING AND TAXES NOT INCLUDED****

***GARAGE NOT INCLUDED* (V6)**

