

ALAMEDA | 2032 sq.ft.



The **CUSTOM ALAMEDA** | 57'X36'6" | 2032 sq.ft. | 3 Bedrooms | 3 Bathrooms | \$310,616*

YOUR PLAN OR OURS

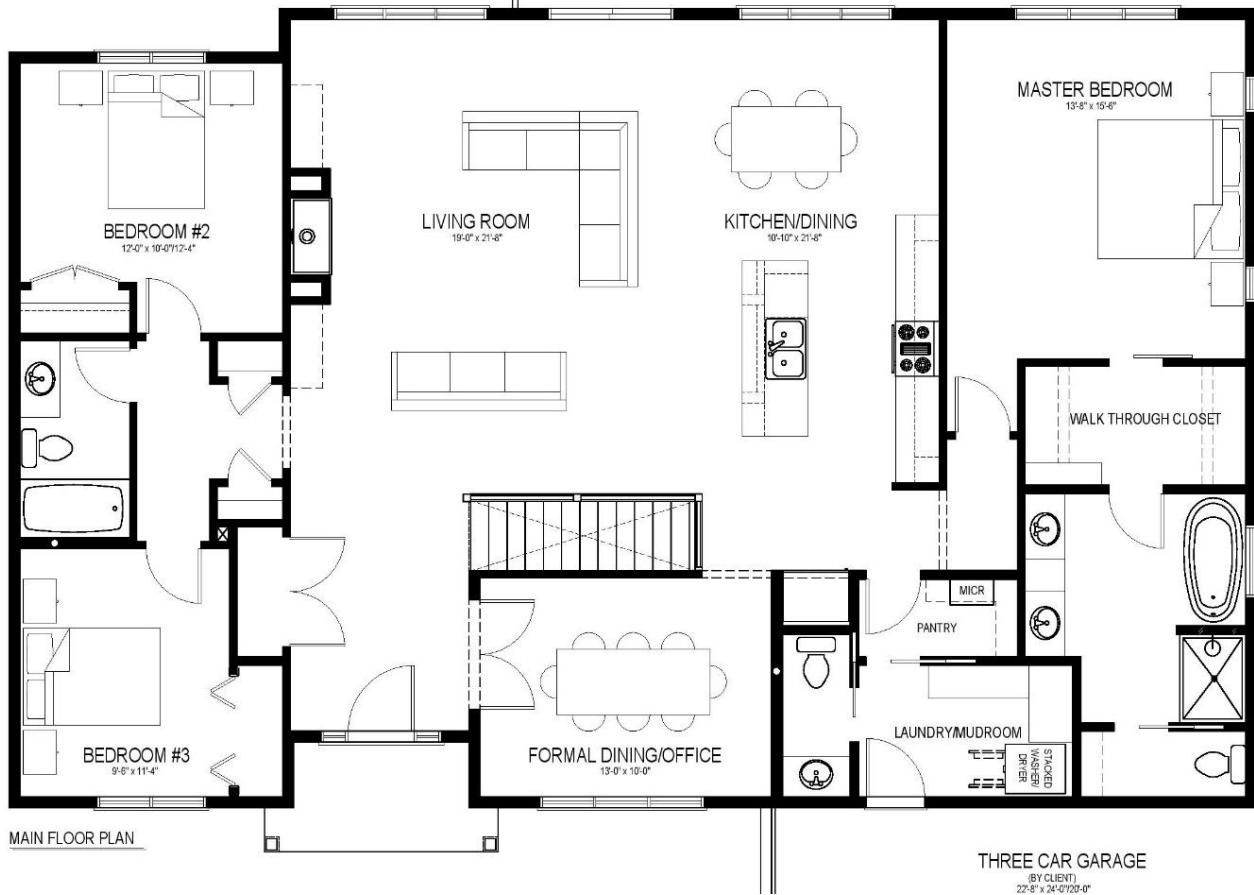
Not exactly what you're looking for?
All plans are fully customizable.

*May be shown with optional features, including, but not limited to material and colours. Overall dimensions shown.



Western Canada's Most Trusted RTM Home Builder Since 1969

J&H Homes | 2505 Avenue C North, Saskatoon, SK | S7L 6A6 | www.jhhomes.com | 306.652.5322 | info@jhhomes.com



The CUSTOM ALAMEDA *A Modern Farm House*

WELCOME HOME to The Alameda. This custom 2032 sq.ft. plan will be your family's retreat in the country.

- This house is all about entertaining! Vaulted ceilings create an expansive space that joins the kitchen and living room making it perfect for hosting family gatherings
- The formal dining features custom coffered ceilings creating an elegant space for those special celebrations
- Enjoy your own master suite oasis featuring a spacious ensuite and walk-through closet.



Western Canada's Most Trusted RTM Home Builder Since 1969