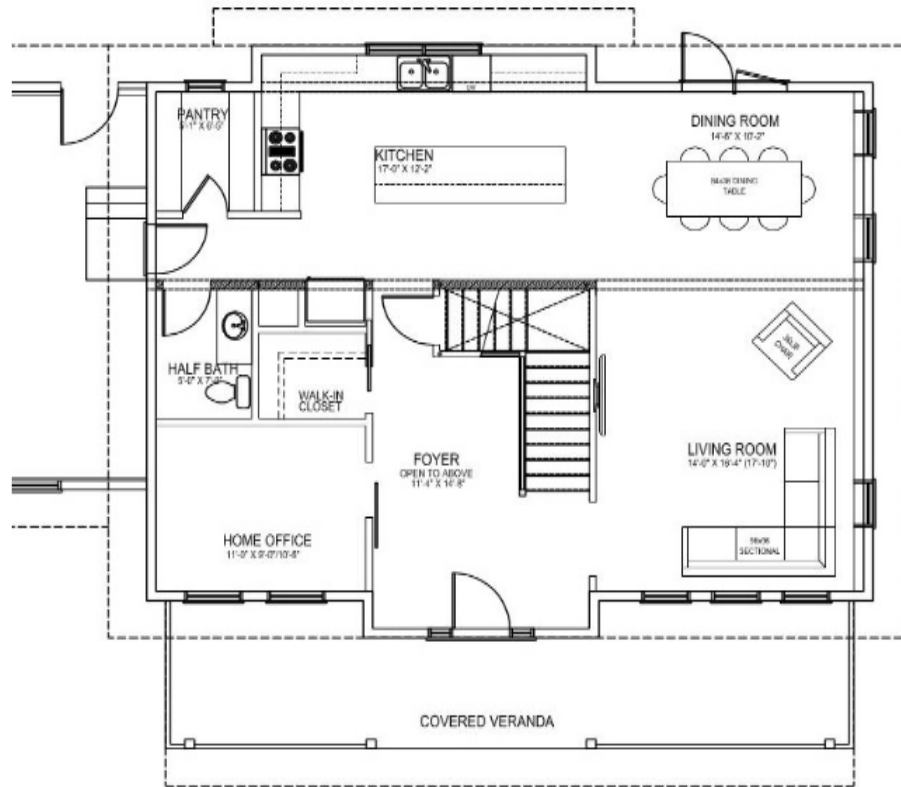




3 Bedrooms | 3 Bathrooms | 2213 sq.ft.

Large Kitchen | 2-Story | Large Shower | Walk-in Closet | Home Office



IMPERIAL II

38'X28'X32'

2213 sq.ft.

\$280,469.14

Actual plans may not be exactly as shown, and can be modified to suit your needs

Western Canada's Most Trusted RTM Home Builder Since 1969

J&H Homes, 2505 Ave C North, Saskatoon, SK S7L 6A6; www.jhhomes.com; Phone- 306-652-5322



IMPERIAL II PLAN | 38' X 28' X 32' | 2213 SQ.FT.

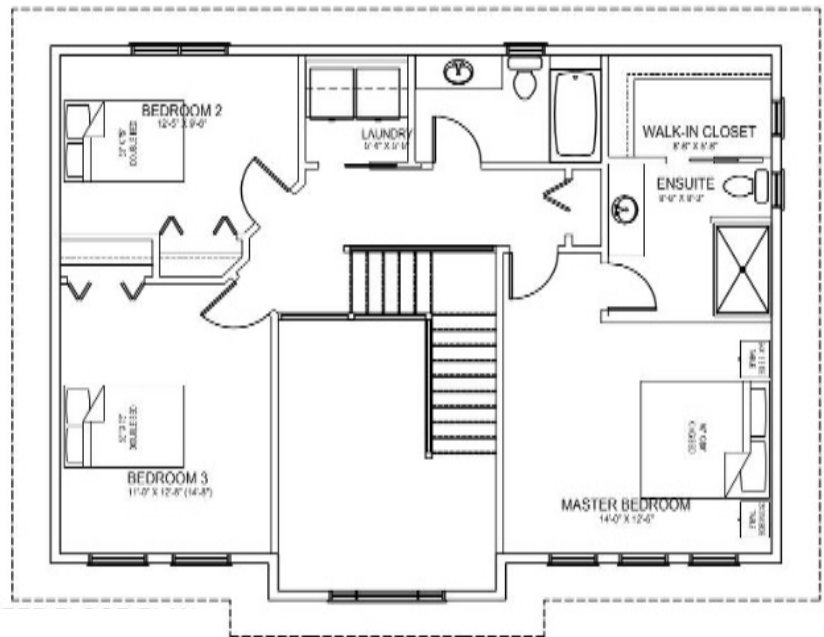
17-Apr-18

J&H BUILDER'S WAREHOUSE, SASKATOON, SK - STANDARD R.T.M. HOME SPECIFICATIONS

BASIC PRICE - includes BSI floor joists 2nd floor
FINISH MATERIAL
SHELVING & RODS
LIGHT FIXTURES INSTALLED - includes 6 pot lights in kitchen & 4 in living room
PAINTING - 1 Primer & 2 finish coats
COMPLETE PLUMBING
BATH ACCESSORIES
WASHER PLUMBING & DRYER OUTLET
TAPING & TEXTURING CEILING
KITCHEN CUPBOARDS - Superior Millwork, laminate c-top
FLOOR COVERINGS
UPGRADE WINDOWS - Triple Pane HS2A
MIRRORS
4 CENTRAL VAC OUTLET
4 TV OUTLETS
4 TELEPHONE OUTLETS
EAVESTROUGHING

HOME OPTIONS INCLUDED IN PRICING

WALK - IN PANTRY c/w motion light
STONE ON FRONT OF HOUSE 4'
TILE FOR BACKSPLASH
DUAL SIDELITES AT ENTRY C/W MATCHING INSERTS
60" X 36" TILED WALL SHOWER IN ENSUITE
WOOD RAILING AT STAIRWELL W/METAL SPINDLES
LAUNDRY ROOM CABINETS
COVERED VERANDA
ISLAND c/w RAISED EATING BAR



TOTAL \$280,469.14

GARAGE NOT INCLUDED

PRICES ARE SUBJECT TO CHANGE WITHOUT NOTICE, TAXES NOT INCLUDED.