

3 Bedrooms | 3 Bathrooms | 1935 sq.ft.

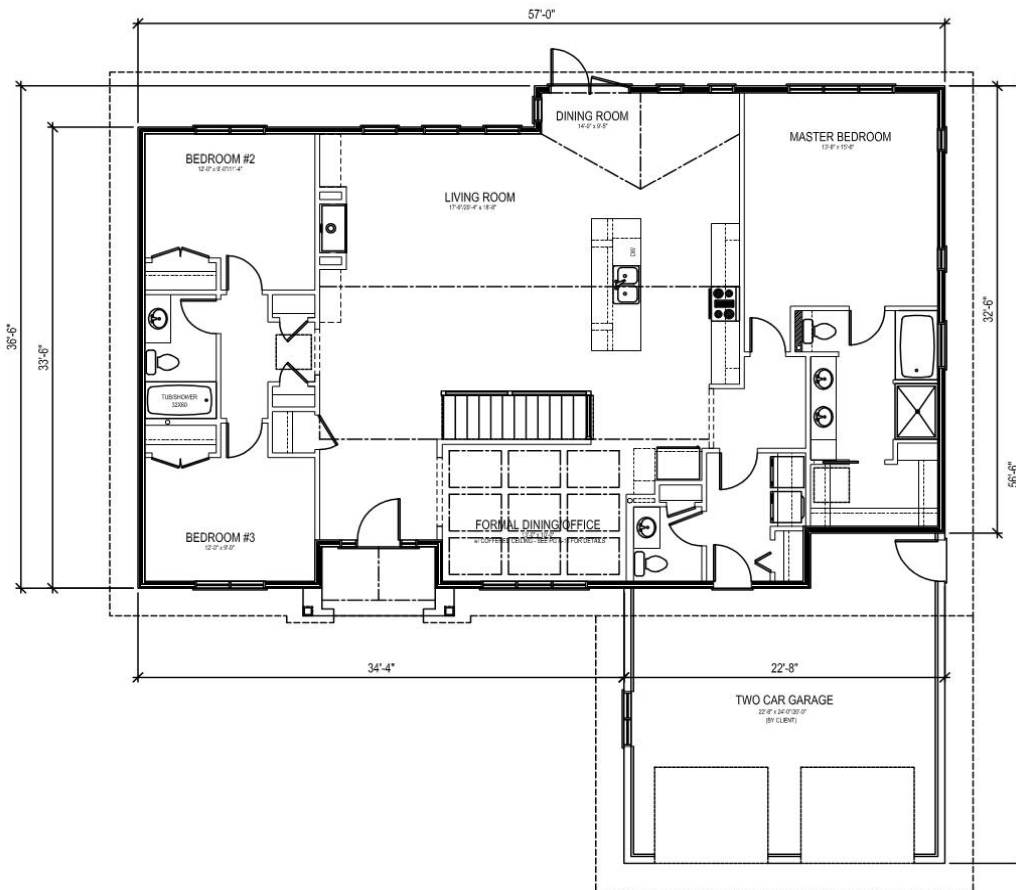
Large living room | Vaulted Ceilings | Formal Dining Area | Gas Fireplace

ALAMEDA

32'6"X33'6"X57

1935 sq.ft.

\$289,944.45



Actual plans may not be exactly as shown, and can be modified to suit your needs

Western Canada's Most Trusted RTM Home Builder Since 1969

J&H Homes, 2505 Ave C North, Saskatoon, SK S7L 6A6; www.jhhomes.com; Phone- 306-652-5322



ALAMEDA PLAN | 32'6" X 33'6" X 57' | 1935 SQ.FT.

23-Apr-18

J&H BUILDER'S WAREHOUSE, SASKATOON, SK - STANDARD R.T.M. HOME SPECIFICATIONS

BASIC PRICE

FINISH MATERIAL - delete bi-folds, includes pocket door
SHELVING & RODS - MDF painted
LIGHT FIXTURES INSTALLED - includes 32 LED pot lights
PAINTING - 1 Primer and 2 Finish Coats
COMPLETE PLUMBING - includes second sink in ensuite
MIRRORS
BATH ACCESSORIES
WASHER PLUMBING & DRYER OUTLET
TAPING & TEXTURING CEILING
CABINETS & COUNTERTOPS – Superior Millwork c/w Quartz Countertops in Kitchen
FLOOR COVERINGS
WINDOWS – Triple Pane HS2A
2 TV OUTLETS
2 TELEPHONE OUTLETS
2 CENTRAL VAC OUTLETS
EAVESTROUGHING

HOME OPTIONS INCLUDED IN PRICING

TILE ABOVE KITCHEN COUNTERTOP AND WALL TILE
48" X 36" TILED WALL SHOWER IN ENSUITE
COTTAGE ROOF AND VAULTING IN LR, DR & KITCHEN
EXTERIOR TRIM & SHAKES
FRONT COVERED ENTRANCE c/w stone posts & fiberon decking
JAMES HARDIE CONCRETE BOARD SIDING
KITCHEN ISLAND
9' CEILING THROUGH OUT
INSERT ON FRONT DOOR WITH DUAL SIDELITES
WINDOW GRILLS
DOUBLE GARDEN DOOR
COFFERED CEILING IN OFFICE/DINING c/w Arches
WOOD RAILING
ROCK ON FRONT AS PER PLAN
NG FIREPLACE (modern style)
FIREPLACE CABINETS
OPTIONAL: STAINLESS STEEL RANGE HOOD & UNDERCABINET LIGHTING

TOTAL \$289,944.45

MOVING AND TAXES NOT INCLUDED

GARAGE NOT INCLUDED (V6)

