



3 Bedrooms | 1 Bathroom | 888 sq.ft.

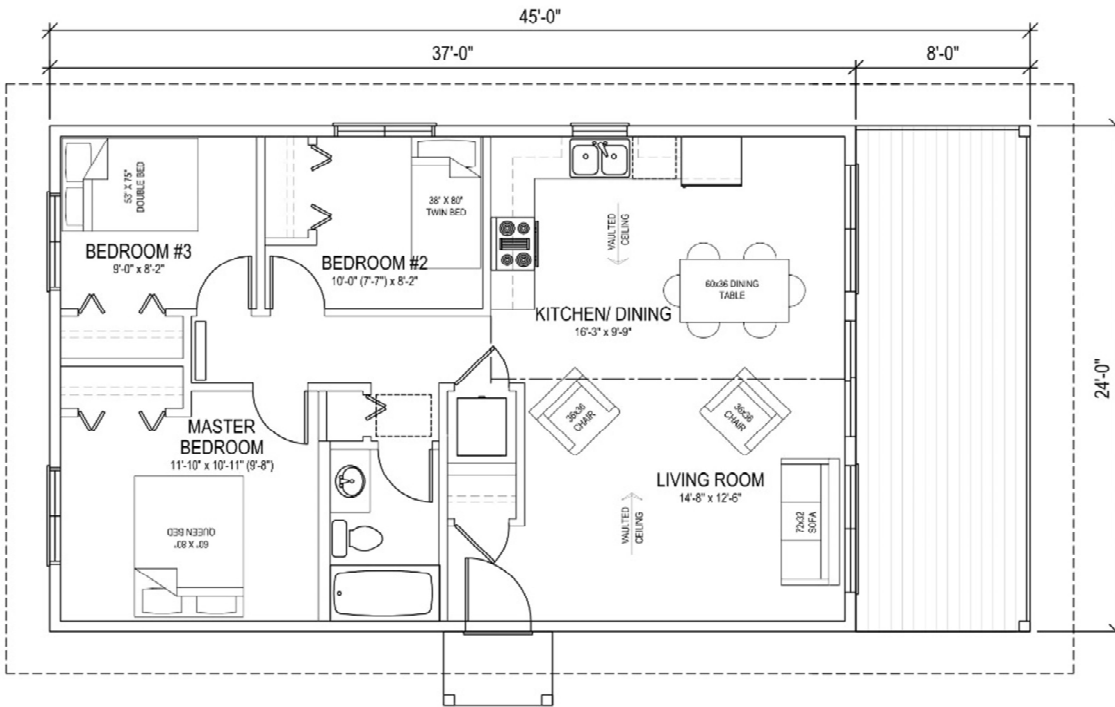
Large Living Area | Vaulted Ceilings | Main Floor Laundry | Covered Veranda

HARPTREE

37'X24'X45'

888 sq.ft.

\$113,481.00



Actual plans may not be exactly as shown, and can be modified to suit your needs

Western Canada's Most Trusted RTM Home Builder Since 1969

J&H Homes, 2505 Ave C North, Saskatoon, SK S7L 6A6; www.jhhomes.com; Phone- 306-652-5322



HARPTREE PLAN | 37' X 24' X 45' | 888 SQ.FT.

1-May-18

J&H BUILDER'S WAREHOUSE, SASKATOON, SK - STANDARD R.T.M. HOME SPECIFICATIONS

BASIC PRICE

FINISH MATERIAL

SHELVING & RODS

LIGHT FIXTURES INSTALLED

PAINTING - 1 Primer & 2 Finish coats

COMPLETE PLUMBING - Main Bath

MIRRORS

BATH ACCESSORIES

WASHER PLUMBING & DRYER OUTLET

TAPING & TEXTURING CEILING

CABINETS & COUNTERTOPS – Superior Millwork

FLOOR COVERINGS

UPGRADE WINDOWS - Triple Pane

2 TV OUTLETS

2 TELEPHONE OUTLETS

1 CENTRAL VAC OUTLET

EAVESTROUGHING

HOME OPTIONS INCLUDED IN PRICING

RAKED WINDOWS

FRONT PATIO DOOR

VAULTED CEILING IN LIVING ROOM, DINING, AND KITCHEN

COVERED VERANDA

TOTAL

\$113,481.00

GARAGE NOT INCLUDED

PRICES ARE SUBJECT TO CHANGE WITHOUT NOTICE, TAXES NOT INCLUDED.

